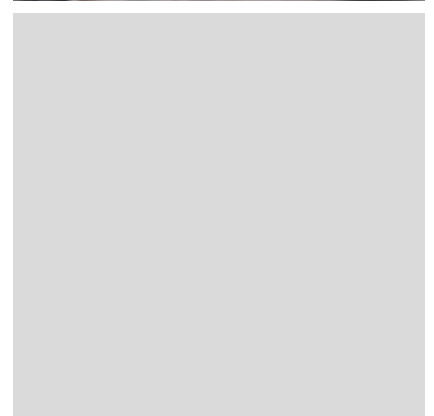
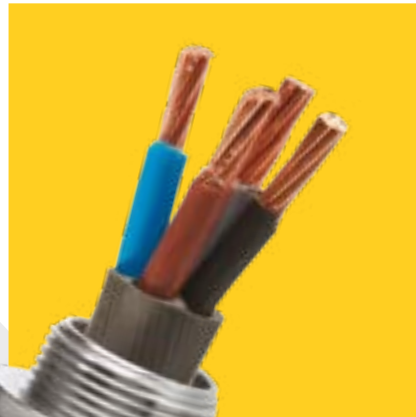




CMP | RAIL

CABLE GLANDS & CABLE CLEATS





DESIGNED FOR THE RAIL INDUSTRY

CMP Products designs and manufactures a wide range of cable glands and accessories, approved for use in the London Underground (LUL) network, as well as product designed and tested for Network Rail.

The CMP 'SOLO' brand in particular, is a trusted reliable solution which has been deployed globally for over 20 years. All SOLO products and accessories are LSF Halogen-Free and have been 3rd party certified by both LUL and IEC.

The outstanding safety benefits of LSF Halogen-Free materials and the stringent test procedures of carried out, ensure that quality, safety and reliability are guaranteed to meet or exceed the demands of both underground and overground rail installations. Products are manufactured from high-grade brass and available with a corrosion-resistant nickel-plated coating, with LSF Halogen-Free elastomeric sealing rings and shrouds. LSF Halogen-Free options are also available to customers for each of our cable glands, no matter what the cable, environment or protection required.

CMP also offers insulated cable glands and accessories, for use in scenarios where circulating currents and induced heating may cause issues.

All of this combined with easy-to-assemble, quick and easy installation ensures that our products are selected time and again by our customers as their product of choice.



SAFE & SECURE CABLE CLEATS

Cable cleats are essential when installing cables within the rail industry in order to ensure the safety of passengers, staff, infrastructure and the longevity of the cable's useful life. All of our cleats are independently tested in accordance with IEC 61914, giving engineers, passengers and personnel peace of mind.

CMP cable cleats are carefully designed and independently tested to give our customers confidence that in the event of a short circuit, they contain the cables without causing harm to people, vehicles or equipment. These ensure the retention and support of cables and conductors, reducing the load the cable might be exposed to.

CMP's cable cleats are manufactured from high quality materials, with excellent flame retardant properties, all of which have been approved to London Underground (LUL) Standard 1-085 meaning that engineers can specify CMP's cable cleats confidently.

As with our cable glands, all of the CMP polymeric and composite (metallic with polymer parts) cable cleats have been tested in accordance with various standards that relate to flame propagation, vertical burning, flammability (oxygen index), halogen gas, toxic fume, and smoke emissions tests.

CMP provides cable cleats in all required materials, for all cable formations and carry some of the highest short circuit resistances on the market.

PRODUCT TYPE	SOLO CABLE GLANDS										CABLE CLEATS																	
	BW BWL	CW CX	EIW EIX EIW	A2 A2RC	A2-737	SABRE FALCON	VALIANT ZENITH	SOLACE THEMIS	CYCLONE	PATRIOT SOVEREIGN	CONQUEROR	HURON	SAPPHIRE	BW BWL	CW CX	EIW EIX EIW	A2 A2RC	A2-737	SABRE FALCON	VALIANT ZENITH	SOLACE THEMIS	CYCLONE	PATRIOT SOVEREIGN	CONQUEROR	HURON	SAPPHIRE		
APPROVALS	LUL 1-085	LUL 1-085	LUL 1-085	LUL 1-085	LUL 1-085	LUL 1-085	LUL 1-085	LUL 1-085	LUL 1-085	LUL 1-085	LUL 1-085	LUL 1-085	LUL 1-085	LUL 1-085	LUL 1-085	LUL 1-085	LUL 1-085	LUL 1-085	LUL 1-085	LUL 1-085	LUL 1-085	LUL 1-085	LUL 1-085	LUL 1-085	LUL 1-085	LUL 1-085	LUL 1-085	
PRODUCT SIZE RANGE	M20 - M75	M20 - M75	M16 - M130	M16 - M130	M16 - M130	M20 - M63	N/A	N/A	N/A	N/A	N/A	N/A	N/A	N/A	N/A	N/A	N/A	N/A	N/A	N/A	N/A	N/A	N/A	N/A	N/A	N/A	N/A	
CABLE TYPE	STEEL WIRE ARMOUR	BRAIDED & STEEL WIRE ARMOUR	BRAIDED & STEEL WIRE ARMOUR	BRAIDED & STEEL WIRE ARMOUR	BRAIDED & STEEL WIRE ARMOUR	UNARMoured	UNARMoured OR CONDUIT CONNECTION	UNARMoured	UNARMoured	UNARMoured	UNARMoured	UNARMoured	UNARMoured	UNARMoured	UNARMoured	UNARMoured	UNARMoured	UNARMoured	UNARMoured	UNARMoured	UNARMoured	UNARMoured	UNARMoured	UNARMoured	UNARMoured	UNARMoured	UNARMoured	
CABLE FORMATION	N/A	N/A	N/A	N/A	N/A	N/A	N/A	N/A	N/A	N/A	N/A	N/A	N/A	N/A	N/A	N/A	N/A	N/A	N/A	N/A	N/A	N/A	N/A	N/A	N/A	N/A	N/A	
CABLE RANGE (mm)	11.7-82.9	6.1-78.4	6.1-123.2	6.1-123.2	6.1-123.2	6.1-56	3.2-114.9	3.2-114.9	3.2-114.9	3.2-114.9	6.1-56	6.1-56	6.1-56	6.1-56	6.1-56	6.1-56	6.1-56	6.1-56	6.1-56	6.1-56	6.1-56	6.1-56	6.1-56	6.1-56	6.1-56	6.1-56	6.1-56	
MAX SHORT CIRCUIT TESTED (kA Peak)**	N/A	N/A	N/A	N/A	N/A	N/A	N/A	N/A	N/A	N/A	N/A	N/A	N/A	N/A	N/A	N/A	N/A	N/A	N/A	N/A	N/A	N/A	N/A	N/A	N/A	N/A	N/A	
LATERAL LOAD AXIAL LOAD	N/A	N/A	N/A	N/A	N/A	N/A	N/A	N/A	N/A	N/A	N/A	N/A	N/A	N/A	N/A	N/A	N/A	N/A	N/A	N/A	N/A	N/A	N/A	N/A	N/A	N/A	N/A	
AVAILABLE MATERIALS	BRASS	NICKEL PLATED BRASS	BRASS / NICKEL PLATED BRASS	BRASS / NICKEL PLATED BRASS	BRASS / NICKEL PLATED BRASS	BRASS / NICKEL PLATED BRASS WITH LSF ADAPTOR	BRASS / NICKEL PLATED BRASS	BRASS / NICKEL PLATED BRASS	BRASS / NICKEL PLATED BRASS	BRASS / NICKEL PLATED BRASS	BRASS / NICKEL PLATED BRASS	BRASS / NICKEL PLATED BRASS	BRASS / NICKEL PLATED BRASS	BRASS / NICKEL PLATED BRASS	BRASS / NICKEL PLATED BRASS	BRASS / NICKEL PLATED BRASS	BRASS / NICKEL PLATED BRASS	BRASS / NICKEL PLATED BRASS	BRASS / NICKEL PLATED BRASS	BRASS / NICKEL PLATED BRASS	BRASS / NICKEL PLATED BRASS	BRASS / NICKEL PLATED BRASS	BRASS / NICKEL PLATED BRASS	BRASS / NICKEL PLATED BRASS	BRASS / NICKEL PLATED BRASS	BRASS / NICKEL PLATED BRASS	BRASS / NICKEL PLATED BRASS	
TEMPERATURE RANGE (°C)	-60 TO 200	-60 TO 130	-60 TO 130	-60 TO 130	-60 TO 130	-20 TO 60	-60 TO 130	-60 TO 130	-60 TO 130	-60 TO 130	-40 TO 60	-40 TO 60	-40 TO 60	-40 TO 60	-40 TO 60	-40 TO 60	-40 TO 60	-40 TO 60	-40 TO 60	-40 TO 60	-40 TO 60	-40 TO 60	-40 TO 60	-40 TO 60	-40 TO 60	-40 TO 60	-40 TO 60	
ADDITIONAL BENEFITS	EMC PROTECTED EASY INSTALL BWL - HEAVY DUTY AVAILABLE	EMC PROTECTED EASY INSTALL IP66	EMC PROTECTED EASY INSTALL IP66	EMC PROTECTED EASY INSTALL IP66	EMC PROTECTED EASY INSTALL IP66	EASY INSTALL IP66, 67, 68 MEETS IEC & EN 62444 INSULATES CABLE GLAND FROM EQUIPMENT	EASY INSTALL IP66, 67, 68 MEETS IEC & EN 62444 A2RC WITH CONDUIT CONNECTION	EASY INSTALL IP66, 67, 68 MEETS IEC & EN 62444	EASY INSTALL IP66, 67, 68 MEETS IEC & EN 62444	EASY INSTALL IP66, 67, 68 MEETS IEC & EN 62444	CERTIFIED TO IEC 61914 STACKABLE UV & WEATHER RESISTANT	CERTIFIED TO IEC 61914 STACKABLE	CERTIFIED TO IEC 61914 STACKABLE	CERTIFIED TO IEC 61914 STACKABLE	CERTIFIED TO IEC 61914 STACKABLE	CERTIFIED TO IEC 61914 STACKABLE	CERTIFIED TO IEC 61914 STACKABLE	CERTIFIED TO IEC 61914 STACKABLE	CERTIFIED TO IEC 61914 STACKABLE	CERTIFIED TO IEC 61914 STACKABLE	CERTIFIED TO IEC 61914 STACKABLE	CERTIFIED TO IEC 61914 STACKABLE	CERTIFIED TO IEC 61914 STACKABLE	CERTIFIED TO IEC 61914 STACKABLE	CERTIFIED TO IEC 61914 STACKABLE	CERTIFIED TO IEC 61914 STACKABLE	CERTIFIED TO IEC 61914 STACKABLE	CERTIFIED TO IEC 61914 STACKABLE

* Shown as example, visit www.cmpproducts.com for specific ordering references
 ** Visit www.cmp-products.com for specific information, rating depends on product type, formation and centre distances. ALL PRODUCTS 3RD PARTY TESTED
 *** Dependent on cable formation

PRODUCT MATRIX

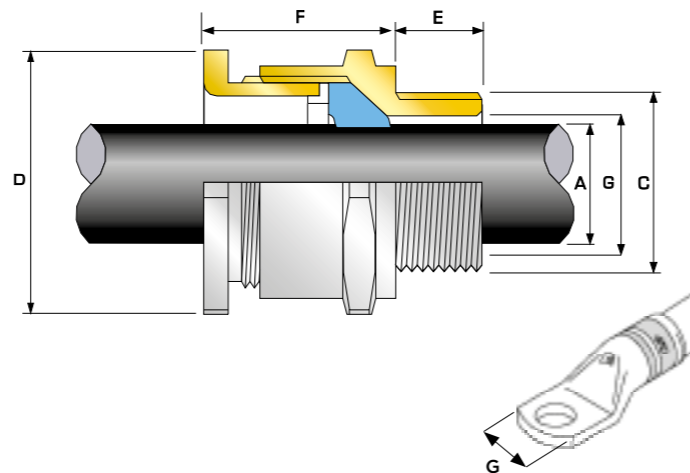


A2-FL

A2-FL CABLE GLAND FOR ROLLING STOCK

FOR ALL TYPES OF UNARMoured CABLES WITH PRE-INSTALLED LUGS

- Designed for cables with pre-installed lugs
- Allows cable to pass through the gland without any disassembly
- Approved to EN 45545-2:2013+A1:2015 R22, R23 (HL1, 2 & 3)
 - For use on rail / rolling stock applications
- High quality durable materials
- Robust, heavy duty design
- Displacement type sealing system
- -60°C to +130°C
- Supplied in nickel plated brass with metric threads, PG threads available



TECHNICAL CLASSIFICATION	
DESIGN SPECIFICATION	IEC 62444:2010 Ed 1, EN 45545-2:2013 + A1:2015, BS EN 61373:2010 & NF C93400 (IEC 60512-17-4)
MECHANICAL CLASSIFICATION*	Impact = Level 7 Cable Anchorage = Class A
ENCLOSURE PROTECTION	IK09 to IEC 62262 (10 joules) Brass & Stainless Steel only
FIRE PROTECTION ON RAILWAY VEHICLES; COMPLIANCE STANDARD	EN 45545-2:2013 + A1:2015 R22, R23 (HL1, HL2 and HL3 Hazard Levels)
INGRESS PROTECTION RATING**	IP66, IP67 & IP68***
CABLE GLAND MATERIAL	Brass, Electroless Nickel Plated Brass, Stainless Steel, Aluminium
CABLE TYPE	Unarmoured with pre-cripped lug
SEAL MATERIAL	CMP LSF0H Thermoset Rubber
SEALING TECHNIQUE	CMP Unique Displacement Seal Concept
SEALING AREA(S)	Cable Outer Sheath

* Mechanical & Electrical Classifications applied as per IEC 62444 & EN 62444
 ** When CMP installation accessories are used. Refer to www.cmp-products.com for further information.
 *** IP68 test durations can be provided upon request

PRODUCT SELECTION TABLE WITH STANDARD ENTRY THREADS

COMBINED ORDERING REFERENCE (NICKEL PLATED BRASS, METRIC THREADS)			AVAILABLE ENTRY THREADS 'C'			OVERALL CABLE DIAMETER 'A'		LUG WIDTH* 'G'	ACROSS FLATS 'D'	ACROSS CORNERS 'D'	PROTRUSION LENGTH 'F'	CABLE GLAND WEIGHT (kgs)
SIZE	TYPE	ORDERING SUFFIX	METRIC	STANDARD THREAD LENGTH 'E'	**SHORT THREAD LENGTH 'E'	MIN	MAX	MAX	MAX	MAX		
2520	A2-FL	IRA501A	M12	15.0	8.0	5.0	8.0	8.0	36.0	39.6	37.0	0.15
2520	A2-FL	IRA501	M16	15.0	8.0	5.0	9.5	9.5	36.0	37.0	0.15	
2520	A2-FL	IRA502	M20	15.0	8.0	5.0	14.0	14.0	36.0	39.6	37.0	0.15
2520	A2-FL	IRA5	M25	15.0	8.0	5.0	14.0	20.0	36.0	39.6	37.0	0.15
3225	A2-FL	IRA503	M25	15.0	9.0	12.0	20.0	20.0	41.0	45.1	37.0	0.17
3225	A2-FL	IRA5	M32	15.0	9.0	12.0	20.0	27.5	41.0	45.1	37.0	0.17
4032S	A2-FL	IRA504	M32	15.0	9.0	15.0	23.8	27.5	50.0	55.0	37.0	0.23
4032	A2-FL	IRA504	M32	15.0	9.0	18.0	26.3	27.5	50.0	55.0	37.0	0.23
4032S	A2-FL	IRA5	M40	15.0	9.0	15.0	23.8	31.5	50.0	55.0	37.0	0.23
4032	A2-FL	IRA5	M40	15.0	9.0	18.0	26.3	34.0	50.0	55.0	37.0	0.23
5040S	A2-FL	IRA5	M50	15.0	10.0	19.8	29.0	40.8	60.0	66.0	37.5	0.33
5040	A2-FL	IRA5	M50	15.0	10.0	23.0	32.2	44.1	60.0	66.0	37.5	0.32
5040	A2-FL	IRA507	M63	15.0	10.0	23.0	32.2	44.1	70.0	77.0	37.5	0.32
5040L	A2-FL	IRA5	M50	15.0	10.0	26.0	35.0	44.1	60.0	66.0	37.5	0.32
5040XL	A2-FL	IRA5	M50	15.0	10.0	32.5	40.0	44.1	60.0	66.0	37.5	0.32

Dimensions are displayed in millimetres unless otherwise stated

* Maximum cable lug to fit through bore of cable gland
 **For short thread lengths add the suffix '/S' after the 'IRA5'
 For alternate entry thread sizes, contact CMP.

PRODUCT SELECTION TABLE WITH ALTERNATIVE ENTRY THREADS

COMBINED ORDERING REFERENCE (NICKEL PLATED BRASS, METRIC THREADS)			AVAILABLE ENTRY THREADS 'C'			OVERALL CABLE DIAMETER 'A'		LUG WIDTH* 'G'	ACROSS FLATS 'D'	ACROSS CORNERS 'D'	PROTRUSION LENGTH 'F'	CABLE GLAND WEIGHT (kgs)
SIZE	TYPE	ORDERING SUFFIX	PG	STANDARD THREAD LENGTH 'E'	**SHORT THREAD LENGTH 'E'	MIN	MAX	MAX	MAX	MAX		
2520	A2-FL	IRA525	PG21	15.0	8.0	5.0	14.0	20.0	36.0	39.6	37.0	0.16

Dimensions are displayed in millimetres unless otherwise stated

Dimensions listed are for metric cable glands only. Dimensions for alternative threads may vary, please see supplementary technical data sheet.

www.cmp-products.com

TO BE USED IN CONJUNCTION WITH DATASHEET TDS821

	CABLE DATA - EUROPEAN WIRE EN50382-2 120°C				CMP CABLE GLAND	
	SIZE	MIN DIA	MAX DIA	GENERIC LUG SIZE	SIZE	ENTRY THREAD
1800V	1x10mm2 F	8.5	10.0	14	20/20	M20
	1x10mm2 F	8.5	10.0	14	25/20	M25
	1x16mm2 F	9.6	11.2	15	25/20	M25
	1x25mm2 F	10.9	12.7	17.5	25/20	M25
	1x50mm2 F	13.5	15.8	21	25/25	M25
	1x50mm2 F	13.5	15.8	21	32/25	M32
	1x70mm2 F	15.2	17.8	23	32/25	M32
	1x95mm2 F	17.0	19.9	27	40/32S	M40
	1x120mm2 F	18.6	21.7	30	40/32S	M40
	1x150mm2 F	20.1	23.5	32	40/32	M40
1x185mm2 F	21.7	25.4	38	50/40S	M50	

3600V	1x10mm2 F	9.7	10.9	14	20/20	M20
	1x10mm2 F	9.7	10.9	14	25/20	M25
	1x25mm2 F	11.8	13.8	17.5	25/20	M25
	1x50mm2 F	14.4	16.9	21	25/25	M25
	1x50mm2 F	14.4	16.9	21	32/25	M32
	1x70mm2 F	16.1	18.9	23	32/25	M32
	1x95mm2 F	17.5	20.5	27	32/32S	M32
	1x95mm2 F	17.5	20.5	27	40/32S	M40
	1x120mm2 F	19.3	22.6	30	40/32	M40
	1x150mm2 F	20.8	24.4	32	40/32	M40
1x185mm2 F	22.6	26.5	38	50/40S	M50	
1x240mm2 F	25.4	29.8	42	50/40	M50	

INDUSTRIAL CABLE GLANDS

A2-FL

INDUSTRIAL CABLE GLANDS

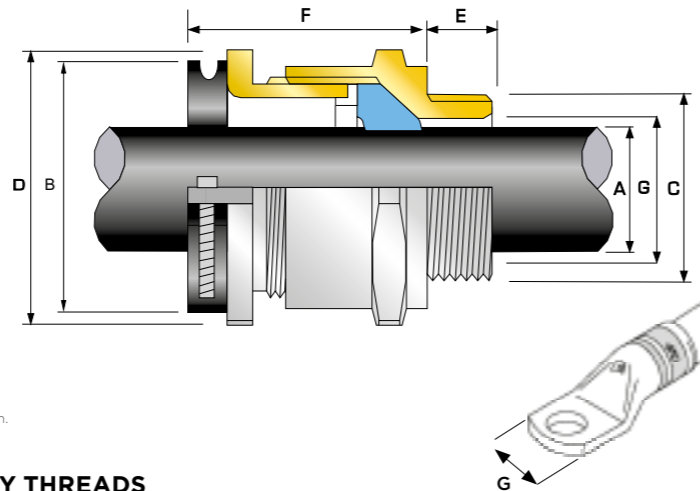
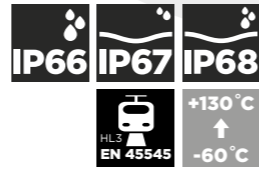
A2-FL

A2EC-FL

A2EC-FL CABLE GLAND FOR ROLLING STOCK WITH HEAVY DUTY CABLE CLAMP

FOR ALL TYPES OF UNARMoured CABLES WITH PRE-INSTALLED LUGS

- Designed for cables with pre-installed lugs
- Allows cable to pass through the gland without any disassembly
- Approved to ACM Standard NF F 61-030
- Approved to EN 45545-2:2013+A1:2015 R22, R23 (HL1, 2 & 3)
 - For use on rail / rolling stock applications
- Provides superior pull and bend resistance on cable
- Eliminates twisting and torquing of the cable
- High quality durable materials
- Robust, heavy duty design
- Displacement type sealing system with UL94 V0 clamp
- -60°C to +130°C
- Supplied in nickel plated brass with metric threads, PG threads available



TECHNICAL CLASSIFICATION	
DESIGN SPECIFICATION	IEC 62444: 2010 Ed1, EN 45545-2:2013 + A1:2015, NF F 61-030:1992, BS EN 61373: 2010 & NFC93400 (IEC 60512-17-4)
MECHANICAL CLASSIFICATION*	Impact = Level 7 Cable Anchorage = Class B (with clamp)
ENCLOSURE PROTECTION	IK09 to IEC 62262 (10 joules) Brass & Stainless Steel only
FIRE PROTECTION ON RAILWAY VEHICLES; COMPLIANCE STANDARD	EN45545-2:2013 + A1:2015 R22, R23 (HL1, HL2 and HL3 Hazard Levels)
INGRESS PROTECTION RATING**	IP66, IP67 & IP68***
CABLE GLAND MATERIAL	Brass, Electroless Nickel Plated Brass, Stainless Steel, Aluminium (Polyamide clamp)
CABLE TYPE	Unarmoured with pre-cripped lug
SEAL MATERIAL	CMP LSF0H Thermoset Rubber
SEALING TECHNIQUE	CMP Unique Displacement Seal Concept
SEALING AREA(S)	Cable Outer Sheath

* Mechanical & Electrical Classifications applied as per IEC 62444 & EN 62444
 ** When CMP installation accessories are used. Refer to www.cmp-products.com for further information.
 *** IP68 test durations can be provided upon request

PRODUCT SELECTION TABLE WITH STANDARD ENTRY THREADS

COMBINED ORDERING REFERENCE (NICKEL PLATED BRASS, METRIC THREADS)			AVAILABLE ENTRY THREADS 'C'			OVERALL CABLE DIAMETER 'A'		LUG WIDTH* 'G'	ACROSS FLATS 'D'	ACROSS CORNERS 'D'	PROTRUSION LENGTH 'F'	CABLE GLAND WEIGHT (kgs)
SIZE	TYPE	ORDERING SUFFIX	METRIC	STANDARD THREAD LENGTH 'E'	**SHORT THREAD LENGTH 'E'	MIN	MAX	MAX	MAX	MAX		
2520	A2EC-FL	IRA501A	M12	15.0	8.0	5.0	8.0	8.0	36.0	39.6	37.0	0.15
2520	A2EC-FL	IRA501	M16	15.0	8.0	5.0	9.5	9.5	36.0	39.6	37.0	0.15
2520	A2EC-FL	IRA502	M20	15.0	8.0	5.0	14.0	14.0	36.0	39.6	37.0	0.15
2520	A2EC-FL	IRA5	M25	15.0	8.0	5.0	14.0	20.0	36.0	39.6	37.0	0.15
3225	A2EC-FL	IRA503	M25	15.0	9.0	12.0	20.0	20.0	41.0	45.1	37.0	0.17
3225	A2EC-FL	IRA5	M32	15.0	9.0	12.0	20.0	27.5	41.0	45.1	37.0	0.17
4032S	A2EC-FL	IRA504	M32	15.0	9.0	15.0	23.8	27.5	50.0	55.0	37.0	0.23
4032	A2EC-FL	IRA504	M32	15.0	9.0	18.0	26.3	27.5	50.0	55.0	37.0	0.23
4032S	A2EC-FL	IRA5	M40	15.0	9.0	15.0	23.8	31.5	50.0	55.0	37.0	0.23
4032	A2EC-FL	IRA5	M40	15.0	9.0	18.0	26.3	34.0	50.0	55.0	37.0	0.23
5040S	A2EC-FL	IRA5	M50	15.0	10.0	19.8	29.0	40.8	60.0	66.0	37.5	0.33
5040	A2EC-FL	IRA5	M50	15.0	10.0	23.0	32.2	44.1	60.0	66.0	37.5	0.32
5040	A2EC-FL	IRA507	M63	15.0	10.0	23.0	32.2	44.1	70.0	77.0	37.5	0.32
5040L	A2EC-FL	IRA5	M50	15.0	10.0	26.0	35.0	44.1	60.0	66.0	37.5	0.32
5040XL	A2EC-FL	IRA5	M50	15.0	10.0	32.5	40.0	44.1	60.0	66.0	37.5	0.32

* Maximum cable lug to fit through bore of cable gland
 **For short thread lengths add the suffix '/S' after the 'IRA5'
 For alternate entry thread sizes, contact CMP.

PRODUCT SELECTION TABLE WITH ALTERNATIVE ENTRY THREADS

COMBINED ORDERING REFERENCE (NICKEL PLATED BRASS, METRIC THREADS)			AVAILABLE ENTRY THREADS 'C'			OVERALL CABLE DIAMETER 'A'		LUG WIDTH* 'G'	ACROSS FLATS 'D'	ACROSS CORNERS 'D'	PROTRUSION LENGTH 'F'	CABLE GLAND WEIGHT (kgs)
SIZE	TYPE	ORDERING SUFFIX	PG	STANDARD THREAD LENGTH 'E'	**SHORT THREAD LENGTH 'E'	MIN	MAX	MAX	MAX	MAX		
2520	A2EC-FL	IRA52S	PG21	15.0	8.0	5.0	14.0	20.0	36.0	39.6	37.0	0.16

CABLE DATA				LUG DATA		CMP GLAND SIZE
Alstom DTR	Cable Description	Min Dia	Max Dia	Lug Code	Generic Lug Size	
DTR0000134981	CABL EURO EN50264-3-1 600V 10M	5.10	5.90	ELP 17	17	25/20
DTR0000140022	CABL EURO EN50382-2 3600V 1X10F	9.50	11.10	ELP 17	17	25/20
DTR0000140007	CABL EURO EN50382-2 1800V 1X10F	8.50	10.00	ELP 17	17	25/20
DTR0000139999	CABL EURO EN50264-3-1 1800V 10M	7.50	8.80	ELP 17	17	25/20
DTR0000135291	CABL EURO EN50264-3-1 600V 25M	7.80	9.10	TN 25	17.5	25/20
DTR0000140001	CABL EURO EN50264-3-1 1800V 25M	9.90	11.60	TN 25	17.5	25/20
DTR0000140023	CABL EURO EN50382-2 3600V 1X25F	11.80	13.80	TN 25	17.5	25/20
DTR0000140009	CABL EURO EN50382-2 1800V 1X25F	10.90	12.70	TN 25	17.5	25/20
DTR0000134949	CABL EURO EN50264-3-1 600V 16M	6.10	7.20	FLP 18	18	25/20
DTR0000134958	CABL EURO EN50264-3-1 600V 35M	9.00	10.60	TN 35	18	25/20
DTR0000135299	CABL EURO EN50264-3-1 1800V 35M	11.10	13.00	TN 35	18	25/20
DTR0000140008	CABL EURO EN50382-2 1800V 1X16F	9.60	11.20	FLP 16	18	25/20
DTR0000135102	CABL EURO EN50264-3-1 600V 50M	10.60	12.40	TN 50	21	25/20

DTR0000140010	CABL EURO EN50382-2 1800V 1X35F	12.10	14.10	TN 35	18	32/25
DTR0000135103	CABL EURO EN50264-3-1 1800V 50M	12.50	14.60	TN 50	21	32/25
DTR0000140039	CABL EURO EN50382-2 3600V 1X50 FXZ	15.20	17.80	TN 50	21	32/25
DTR0000140024	CABL EURO EN50382-2 3600V 1X50F	14.40	16.90	TN 50	21	32/25
DTR0000140011	CABL EURO EN50382-2 1800V 1X50F	13.50	15.80	TN 50	21	32/25
DTR0000135035	CABL EURO EN50264-3-1 600V 70M	12.50	14.60	TN 70	24	32/25
DTR0000140040	CABL EURO EN50382-2 3600V 1X70 FXZ	16.90	19.80	TN 70	24	32/25
DTR0000135040	CABL EURO EN50264-3-1 1800V 70M	14.20	16.60	TN 70	24	32/25
DTR0000140012	CABL EURO EN50382-2 1800V 1X70F	15.20	17.80	TN 70	24	32/25
DTR0000140025	CABL EURO EN50382-2 3600V 1X70F	16.10	18.90	TN 70	24	32/25
DTR0000135215	CABL EURO EN50264-3-1 600V 95M	13.90	16.30	TN 95	27.5	32/25
DTR0000135303	CABL EURO EN50264-3-1 1800V 95M	16.00	18.70	TN 95	27.5	32/25

DTR0000140031	CABL EURO EN50382-2 3600V 1X50FF	17.50	20.50	TN 50	21	40/32S
DTR0000140026	CABL EURO EN50382-2 3600V 1X95F	17.50	20.50	TN 95	27.5	40/32S
DTR0000140013	CABL EURO EN50382-2 1800V 1X95F	17.00	19.90	TN 95	27.5	40/32S
DTR0000134892	CABL EURO EN50264-3-1 600V 120M	15.70	18.40	TN 120	31.2	40/32S
DTR0000136177	CABL EURO EN50264-3-1 1800V 120M	17.60	20.60	TN 120	31.2	40/32S

DTR0000140032	CABL EURO EN50382-2 3600V 1X70FF	19.20	22.40	TN 70	24	40/32
DTR0000140033	CABL EURO EN50382-2 3600V 1X95FF	20.80	24.30	TN 95	27.5	40/32
DTR0000140041	CABL EURO EN50382-2 3600V 1X95 FXZ	18.30	21.40	TN 95	27.5	40/32
DTR0000140014	CABL EURO EN50382-2 1800V 1X120F	18.60	21.70	TN 120	31.2	40/32
DTR0000140027	CABL EURO EN50382-2 3600V 1X120F	19.30	22.60	TN 120	31.2	40/32
DTR0000140034	CABL EURO EN50382-2 3600V 1X120FF	22.40	26.20	TN 120	31.2	40/32
DTR0000140042	CABL EURO EN50382-2 3600V 1X120 FXZ	20.10	23.50	TN 120	31.2	40/32
DTR0000140043	CABL EURO EN50382-2 3600V 1X150 FXZ	21.60	25.30	TN 150	34	40/32
DTR0000140035	CABL EURO EN50382-2 3600V 1X150FF	24.10	26.20	TN 150	34	40/32
DTR0000140028	CABL EURO EN50382-2 3600V 1X150F	20.80	24.40	TN 150	34	40/32
DTR0000140015	CABL EURO EN50382-2 1800V 1X150F	20.10	23.50	TN 150	34	40/32
DTR0000140002	CABL EURO EN50264-3-1 1800V 150M	19.10	22.30	TN 150	34	40/32

DTR0000140003	CABL EURO EN50264-3-1 1800V 185M	20.90	24.40	TN 185	38.5	50/40S
DTR0000140017	CABL EURO EN50382-2 1800V 1X185F	21.70	25.40	TN 185	38.5	50/40S
DTR0000140029	CABL EURO EN50382-2 3600V 1X185F	22.60	26.50	TN 185	38.5	50/40S

DTR0000140036	CABL EURO EN50382-2 3600V 1X185FF	26.40	30.90	TN 185	38.5	50/40
DTR0000140044	CABL EURO EN50382-2 3600V 1X185 FXZ	23.40	27.40	TN 185	38.5	50/40
DTR0000135079	CABL EURO EN50264-3-1 1800V 240M	23.70	27.50	TN 240	43	50/40
DTR0000140018	CABL EURO EN50382-2 1800V 1X240F	24.10	28.20	TN 240	43	50/40
DTR0000140030	CABL EURO EN50382-2 3600V 1X240F	25.40	29.80	TN 240	43	50/40

DTR0000140038	CABL EURO EN50382-2 3600V 1X240FF	29.40	34.40	TN 240	43	50/40L
---------------	-----------------------------------	-------	-------	--------	----	--------

ABOUT CMP

SECURING CABLES WORLDWIDE

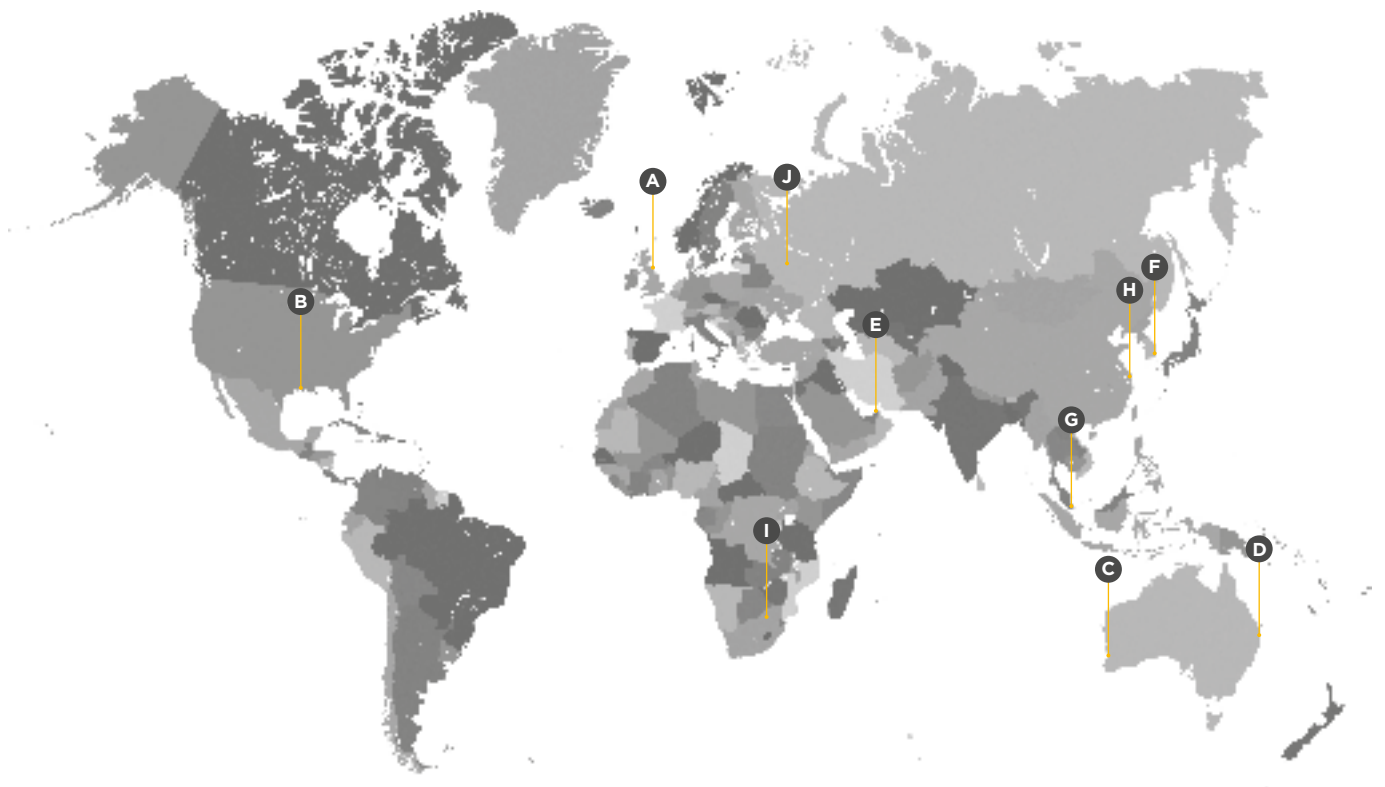


At CMP Products, we owe our success to our commitment to quality, dedication to innovation and investment in our people.

As a market-leading specialist designer and manufacturer of cable glands, cable cleats and accessories, CMP has been providing safe and innovative solutions to the global market for over 60 years; gaining us an international reputation for quality and reliability.

Our products are developed to suit a wide range of hazardous and industrial applications; including industries such as mining, oil & gas, rail, pharmaceuticals and construction. They have been designed and rigorously tested to cover a variety of international codes, standards and approvals.

Our high-quality products are reinforced with exceptional customer service and innovative solutions; we offer on-hand technical support from our experts across the globe, from 10 different offices spread across 6 continents.



A NEWCASTLE (Headquarters)

CMP Products Limited
United Kingdom
Tel: +44 (0) 191 2657411
E-Mail:
customerservices@cmp-products.com

B HOUSTON

CMP Products Texas Inc
Texas, USA
Tel: +1 281 776 5201
E-Mail:
houstonoffice@cmp-products.com

C PERTH, WA

CMP Products Pty Ltd
Australia
Tel: +61 8 9249 4508
E-Mail: perthoffice@cmp-products.com

D BRISBANE, QLD

CMP Products Pty Ltd
Australia
Tel: +61 7 3801 0301
E-Mail: qldoffice@cmp-products.com

E DUBAI

CMP Products Middle East Office
United Arab Emirates
Tel: +971 4 214 6114
E-Mail: meoffice@cmp-products.com

F BUSAN

CMP Products (Korea) Ltd
South Korea
Tel: +82 51 780 5300
E-Mail: busanoffice@cmp-products.com

G SINGAPORE

CMP Products (S.E.A) Pte Ltd.
Singapore
Tel: +65 6466 6180
E-Mail: seaoffice@cmp-products.com

H SHANGHAI

CMP Products Division
P.R. China
Tel: +86 21 5837 9978
E-Mail: shanghaioffice@cmp-products.com

I JOHANNESBURG

CMP Products
South Africa
Tel: +27 11 266 8880
E-Mail: africaoffice@cmp-products.com

MOSCOW

J CMP Products
Russia
Tel: +7 495 803 3794
E-Mail:
russiaoffice@cmp-products.com

www.cmp-products.com

TPC243 rev0 10/21

© Copyright CMP Products 2021