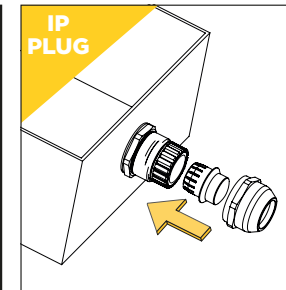
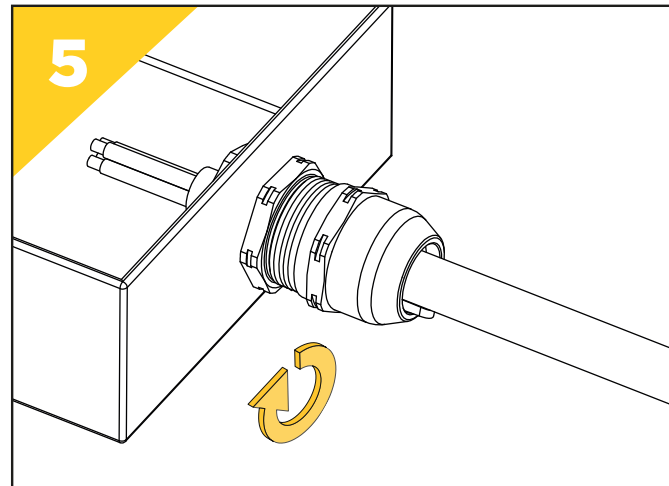
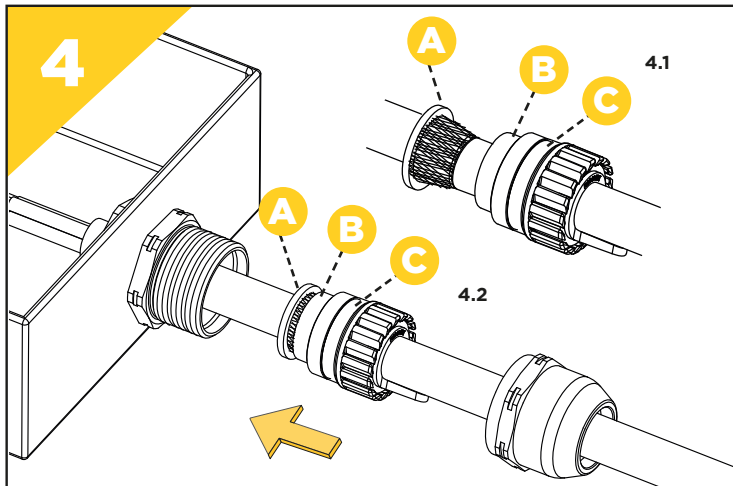
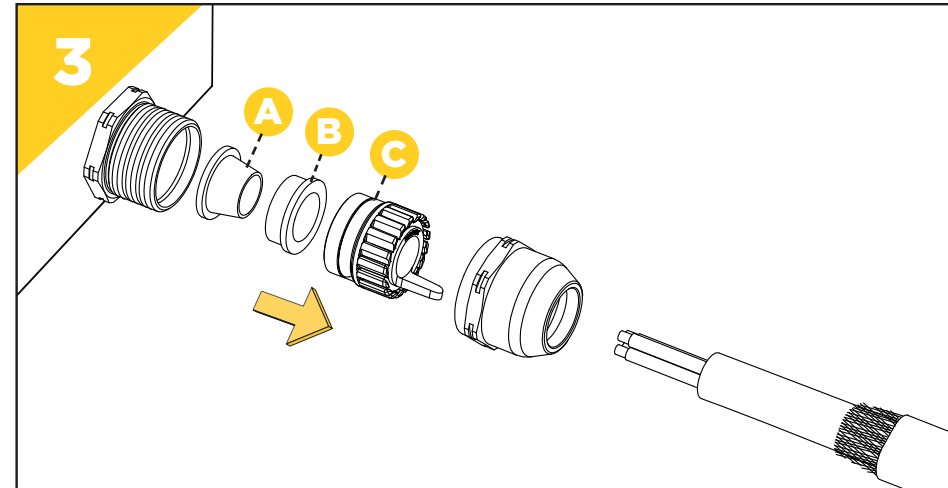
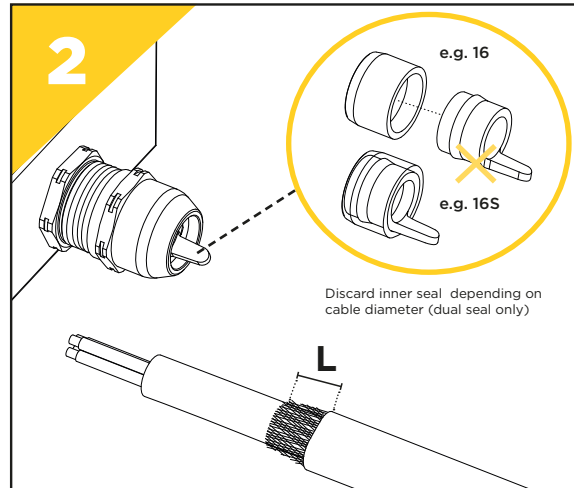
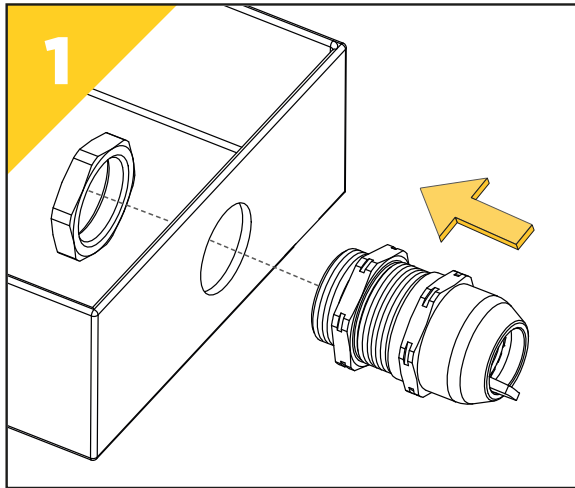


# TRUS<sub>3</sub>AL TSX



**OPTIONAL IP PLUG INSTALLATION**  
To install the IP Plug, insert the IP Plug as per the image (for the dual inner seals, make sure the notch in the IP Plug aligns with the tab on the seal) then tighten as per the table below.

Size	Number of turns
12	1.5
16	1
20	1.5
25	1
32	1
40	1
50	1
63	1.5

**INSTALLATION NOTES:**

**ENTRY THREADS: PRODUCT SIZE:** 12 = M12 1/4", 16 = M16 3/8", 20 = M20 1/2", 25 = M25 3/4", 32 = M32 1", 40 = M40 1-1/4", 50 = M50 1-1/2", 63 = M63 2"  
**ENTRY THREAD LENGTHS:** STANDARD 12, 16 = 6mm, 20 = 6.5mm, 25 = 7mm, 32, 40 = 8mm, 50 = 9mm, 63 = 10mm  
**MAXIMUM CLEARANCE HOLE SIZE:** 12 - 25 = 0.2mm, 32 - 40 = 0.3mm, 50 - 63 = 0.4mm ABOVE THE MAJOR THREAD DIAMETER  
**CABLE ANCHORAGE 'A', IMPACT RATING:** CATAGORY 6

Cable Gland Size	Hex Size (mm)	Cable Diameter (mm)		Number of Turns			Length 'L' (mm)
		Min	Max	On Min Cable	On Mid/Cable	On Max Cable	
12	16	3	6.5	4.5	4.5	4.5	8
16S	3	7	5	4.5	4		
16	20	6	10	5.5	4.5	3	11
20S	5	10	8.5	6.5	4		
20	24	9	14	8	6	3.5	11
25S	9	15.5	5	3.5	2		
25	30	12.5	18	4	5	2	13
32S	12.5	19	5.5	4	2.5		
32	39	17	25	6	4	2	14
40S	19	27	6.5	4.5	2.5		
40	50	24	32	6	4	2	15
50S	22	32	8.5	6	3		
50	57	28	38	8.5	5	2.5	19
63S	28	39	8	5	1.5		
63	68	37	48	8.5	5.5	2	20