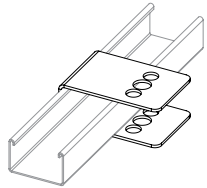


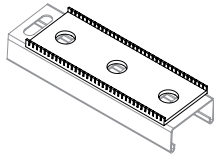
## ACCESSORIES

### C-clamp



For use with un-slotted rungs.

### Separation Pad



Prevent galvanic corrosion between two dissimilar metals.

Contact **CMP** for more information regarding accessories and substrates.

## PPE



CAUTION: We strongly recommend wearing suitable PPE including anti cut gloves.

Please refer to local PPE regulations.

[www.cmp-products.com](http://www.cmp-products.com)

Tel: +44 (0) 191 265 7411

Fax: +44 (0) 1670 715 646

E-mail: [customerservices@cmp-products.com](mailto:customerservices@cmp-products.com)

Cable Cleat Specification						
Name	Type	Material	Certification	Temp Range	Liner Type	Bolt(s)*
SATURN	QSDSS	Stainless Steel	IEC 61914	-50°C to +60°C	Low Smoke & Fume (LSF) Zero Halogen (LSOH) Polymer	2 x Outer M10 or 1 x Central M10

All products are short-circuit tested. Please visit [www.cmp-products.com](http://www.cmp-products.com) for further details.

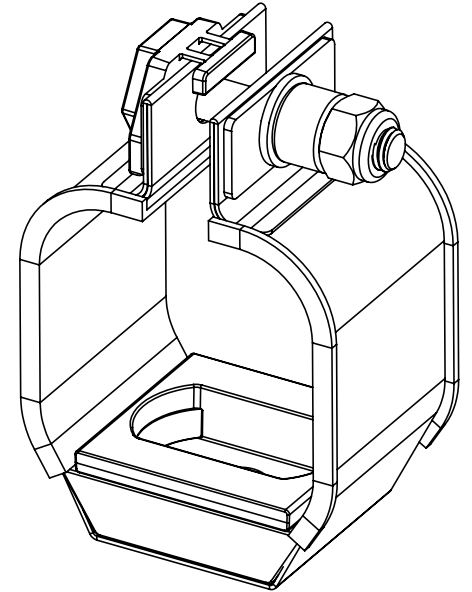
**Note:** Fixings not included. For more information on fixings please visit [www.cmp-products.com](http://www.cmp-products.com) and download the Cleat Fixing Pack data sheet. Any other queries please contact CMP via email [customerservices@cmp-products.com](mailto:customerservices@cmp-products.com).

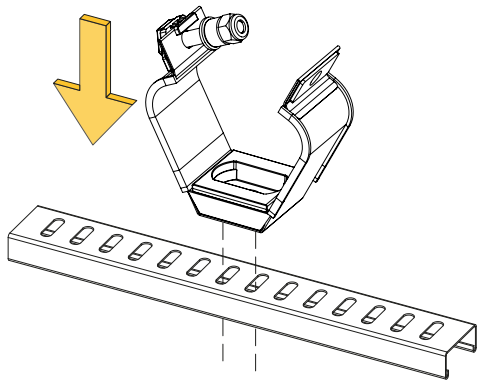
There are no restrictions on the mounting orientation of the cleats.

\* The number of bolts used is based on individual site specification.

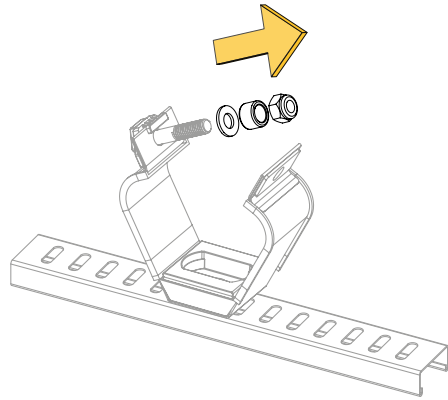
# SATURN CABLE CLEAT

## SATURN QSDSS



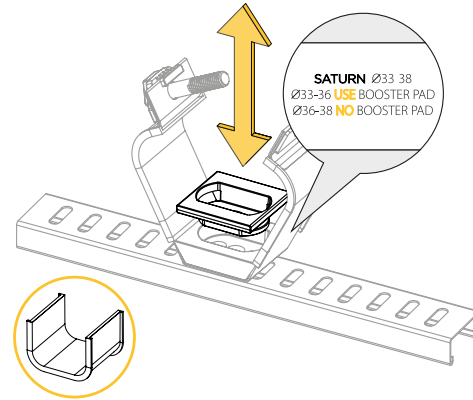


1. PLACE CLEAT ON MOUNT SURFACE



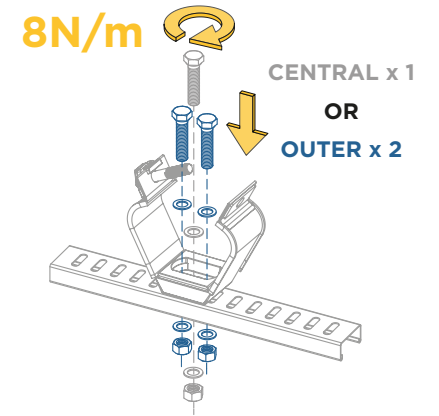
• Use nut spacer where applicable

2. REMOVE THE NUT, NUT SPACER AND WASHER

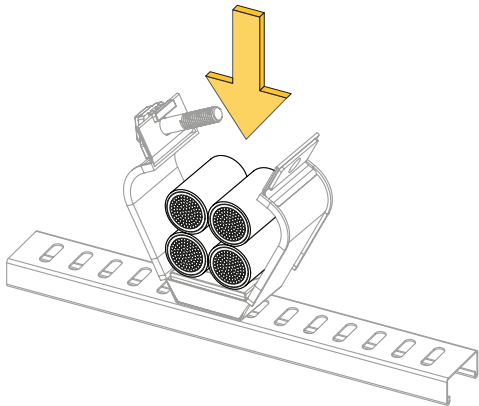


• Booster pad supplied varies based on cleat size

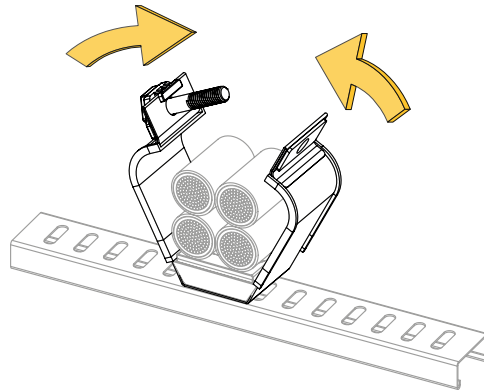
3. REMOVE OR INSERT BOOSTER PAD AS REQUIRED



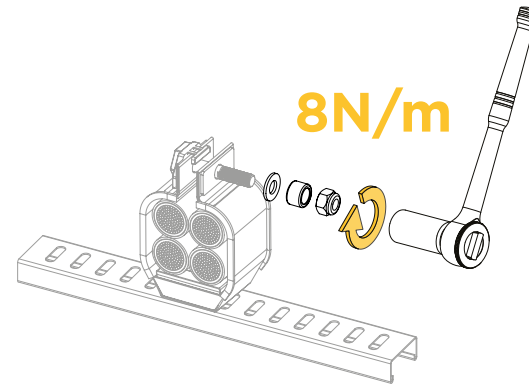
4. SECURE CLEAT TO MOUNT SURFACE



5. LAY CABLES IN CLEAT



6. CLOSE CLEAT ARMS



7. TIGHTEN MOUTH BOLT NUT



SECURING CABLES WORLDWIDE