

Sapphire

(SHDSS Single Cable Cleat)

Features

- Third party certification to IEC 61914:2009
- 316L Stainless Steel
- 26 - 150mm in 12 sizes for single / parallel formation
- Operating temperature of -50°C to +60°C
- Low Smoke & Fume (LSF) liners as standard
- Combined single (M12) and two bolt (M10) fixing design



www.cmp-products.com

FI506 REV 2 02/17

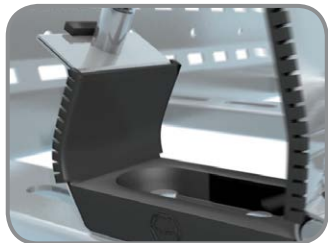
Sapphire

(SHDSS Single Cable Cleat)

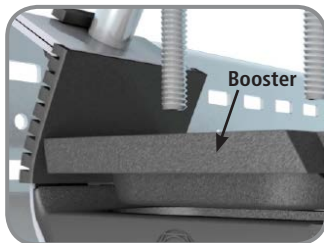


**Cleat Installation
Instructions**

CMP Cleat Installation Instructions



1. Place the cable cleat in desired location on mounting surface and unhinge the cable cleat.



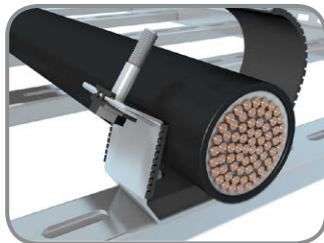
2. Insert base booster if required and secure to mounting surface.



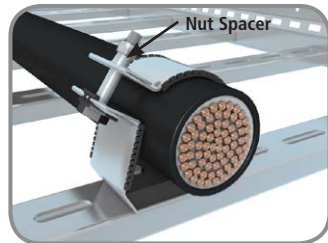
3. Secure cleat to mounting surface, adding a washer and nut on both sides.



4. Tighten down to specified torque rating of 8Nm.



5. Place cable into the cleat and pull the hinged arm over the cable.



6. Use supplied mouth piece fittings to tighten down to no more than 8Nm using a 19mm spanner.

Note: Cleat marking can be found on hinged arm