

Sabre (1BC Plastic)

Features

- Third party certification to IEC 61914:2009
- Available in Nylon, LSF V0 Nylon & LUL approved polymer
- Sunlight (UV) + weather resistant
- Operating temperature -40°C to +60°C
- 10 - 57mm in 10 sizes
- Excellent axial & lateral load retention
- Single bolt fixing design



www.cmp-products.com

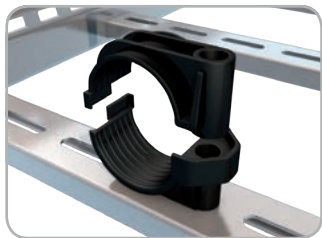
FI505 REV 0 06/16

Sabre (1BC Plastic)



**Cleat Installation
Instructions**

CMP Cleat Installation Instructions



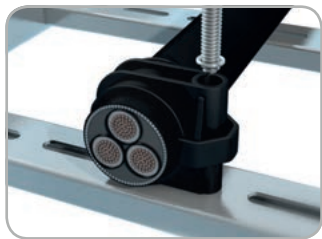
1 Separate cleat halves



2 Place cable into the cleat



3 Place second half of cleat over cable locating in to bottom half of the cleat



4 Place fittings through the cleat (not supplied as standard)



5 Tighten top half of cleat using washer and nut to specified torque rating 8N/m