



TECHNICAL DATA

CABLE GLAND TYPE : TE1FU / TE1FUPB
INGRESS PROTECTION : IP66, IP67, IP68, NEMA 4X, DELUGE TO DTS01-01
PROCESS CONTROL SYSTEM : ISO 9001
 : ISO / IEC 80079-34:2011

EXPLOSIVE ATMOSPHERES CLASSIFICATION

ATEX CERTIFICATION No : CML 18ATEX1326X, CML 18ATEX4318X
ATEX CERTIFICATION CODE : II 2G, II 1D, Ex db IIC Gb, Ex eb IIC Gb, Ex ta IIIC Da, II 3G Ex nR IIC Gc, II M2, Ex db I Mb, Ex eb I Mb
UKEX CERTIFICATION No : CML 21UKEX1258X, CML 21UKEX4259X
UKEX CERTIFICATION CODE : II 2G, II 1D, Ex db IIC Gb, Ex eb IIC Gb, Ex ta IIIC Da, II 3G Ex nR IIC Gc, II M2, Ex db I Mb, Ex eb I Mb

IECEx CERTIFICATION No : IECEx CML 18.0183X
IECEx CERTIFICATION CODE : Ex db IIC Gb, Ex eb IIC Gb, Ex nR IIC Gc, Ex ta IIIC Da, Ex db I Mb, Ex eb I Mb
cCSAus CERTIFICATION No : 1310517X
cCSAus CERTIFICATION CODE : Class II Div 2, Groups E,F and G, Class III, Class I Zone 1 AEx e II, Class I Zone 2 AEx nR II, Enclosure Type 3,4 and 4X, OIL RES II
c CSA CERTIFICATION CODE : Class I, Div 2, Groups A,B,C and D, Class II Div 2, Groups E,F and G, Class III, Ex d IIC, Ex e II, Ex nR II, Enclosure Type 3,4 and 4X, OIL RES II

*TE** can be used in Class 1, Division 2 Locations for non-explosionproof applications in accordance with Article 501 of the NEC Code

INSTALLATION INSTRUCTIONS

Installation should only be performed by a competent person using the correct tools. Read all instructions before beginning installation.

CERTIFICATION CONDITIONS

1. The TE** Type cable glands shall not be used to terminate on braided cables in group I applications. The glands when used for terminating braided cables are only suitable for fixed installations. Cables must be effectively clamped to prevent pulling or twisting.
2. The interface between a cable entry device and its associated enclosure / cable entry will require additional sealing to achieve ingress protection (IP) ratings higher than IP54. The minimum protection level is IP54 for explosive gas atmospheres and IP6X for explosive dust atmospheres. Parallel threads (and tapered threads when using a non-threaded entry) require a CMP sealing washer or integral O-ring face seal (where available) to maintain IP66, 67 and 68 (when applicable). It is the installer's responsibility to ensure the IP rating is maintained at the interface.
3. Note: When fitted to a threaded entry, all tapered threads will automatically provide an ingress protection rating of IP66. A CMP earth tag should be used when it is necessary to provide an earth bond connection. CMP earth tags have been independently tested to comply with Category B rating specified in IEC 62444 (there are no ratings stated in IEC 60079-0). Ratings are shown in the associated table. CMP earth tags slip over the cable gland or accessory entry thread from inside/outside the enclosure and must be secured with a locknut (if fitted internally).
4. Metric entry threads comply with ISO 965-1 and ISO 965-3 with a 6g tolerance as required by IEC 60079-1:2014. The CMP standard metric thread pitch is 1.5mm for threads up to M75, and 2.0mm from M90 and above. Special thread pitches between 0.7 – 2.0mm are available on all products on request. See certificate for details of other thread types. NPT threads are in accordance with ASME B1.20.1-2013 gauging to Cl 3.2 for external threads. For details of other thread types refer to IECEx certificate.
5. Enclosures must be strong enough to support the cable and cable gland assembly. The enclosure surface finish must be smooth and flat to facilitate sealing with an O-ring or Entry Thread Sealing Washer for the required IP rating.
6. Enclosure walls must be sufficiently strong enough to support the cable and cable gland assembly. Enclosure entries shall be perpendicular. Any draft angles from the casting/ moulding process should have a perpendicular flat spot machined to facilitate sealing with an O-ring or Entry Thread Sealing Washer.
7. CMP Products recommends that when using the cable gland with a through-hole, the hole must be circular, free of burrs and the diameter no larger than 0.7mm above the thread major diameter. A suitable CMP Products locknut shall be used to secure the product. See CMP Products catalogue for locknut options
8. Cable glands do not have any serviceable parts and are therefore not intended to be repaired.

- CSA us**
1. Cable gland connectors material may be of brass, aluminum or stainless steel.
 2. Connectors with metric entry threads are only suitable for Areas Classified in ZONES unless fitted with an approved Metric to NPT thread conversion adaptor.
 3. According to US (NEC) wiring method for the types of cables that can be used in Class I Zone 1 and 2 Classified Areas, should be in accordance of NFPA-70 installation wiring method restrictions.
- c CSA**
1. Cable gland connectors' material may be of brass, aluminium or stainless steel.
 2. These glands are not suitable for use with flameproof enclosures installed in Group IIC atmospheres, which have a volume greater than 2000 cc (2 Litre).
 3. These Glands are for use with Certified Marine Shipboard metal braided cables constructed according to CSA Std. 245 and IEE45/IEC600092-353 Standards, or Certified equivalent), for use on Shipboards and Offshore Rigs/platforms only.
 4. **TE** cable gland connectors when installed into Class 1, Division 2 Classified Areas, are not suitable to be interfaced with an explosion proof enclosure containing arcing and sparking devices, unless installed in conjunction with an approved explosion proof sealing fitting.

CMP Earth Tag Size	Short Circuit Ratings Symmetrical Fault Current (kA) for 1 second
20	3.06
25	4.06
32	5.40
40	7.20
50	10.40
63	10.40
75	10.40

ACCESSORIES

The following accessories are available from CMP Products, as optional extras, to assist with fixing, sealing and earthing: Locknut, Earth Tag, Serrated Washer, Entry Thread (I.P.) Sealing Washer, Shroud

CMP Products Limited on its sole responsibility declares that the equipment referred to herein conforms to the requirements of the ATEX Directive 2014/34/EU and UK statutory requirements SI 2016 No. 1107 (as amended). This is shown in the following harmonised/designated standards:
 EN 60079-0:2018, EN 60079-1:2014, EN 60079-7:2015 + A1:2018, EN 60079-15:2017, EN 60079-31:2014

Malcolm Webber
 Malcolm Webber - Product Engineering Manager - (Authorised Person)
 CMP Products Limited, Cramlington, NE23 1WH, UK

EU Economic Operator: CMP Products Germany GmbH. Address: Lukasstraße 25a, 52070 Aachen
 17th March 2020



Notified Body: CML B.V., Koopvaardijweg 32, 4906CV Oosterhout, The Netherlands

Approved Body: Eurofins E&E CML Limited, Newport Business Park, New Port Road, Ellesmere Port, CH65 4LZ

www.cmp-products.com



INSTALLATION INSTRUCTIONS FOR CMP CABLE GLAND TYPES TE1FU & TE1FUPB

STAINLESS STEEL CABLE GLAND FOR USE WITH SINGLE WIRE ARMOUR (SWA), WIRE BRAID, STRIP, AND TAPE ARMOUR (TE1FUPB VERSION CAN ALSO BE USED ON CABLE WITH A LEAD SHEATH). FOR USE IN EXPLOSIVE ATMOSPHERES. CDS™ DELUGE PROOF CABLE GLAND FEATURING COMPENSATING DISPLACEMENT SEAL SYSTEM.

INCORPORATING EU DECLARATION OF CONFORMITY TO DIRECTIVE 2014/34/EU AND UK STATUTORY REQUIREMENTS SI 2016 No. 1107 (AS AMENDED)



Number of turns to tighten	Outer Seal Tightening Guide												
	GLAND SIZE												
	20S16	20S	20	25S	25	32	40	50S	50	63S	63	75S	75
	CABLE DIAMETER												
0.5	13.2	15.9	20.9	22.0	26.2	33.9							
1	12.5	15.3	20.0	21.2	25.4	32.9	40.4	46.7	52.8	59.2	65.9	72.1	78.5
1.5	11.9	14.7	19.0	20.4	24.6	31.9	39.0	45.4	51.4	57.7	64.6	70.6	77.2
2	11.2	14.2	18.1	19.6	23.8	30.8	37.6	44.1	50.0	56.2	63.4	69.2	75.9
2.5	10.5	13.6	17.2	18.8	23.0	29.8	36.2	42.9	48.7	54.7	62.1	67.7	74.6
3	9.8	13.0	16.2	18.0	22.2	28.8	34.8	41.6	47.3	53.2	60.9	66.3	73.3
3.5	9.2	12.4	15.3	17.2	21.4	27.8	33.5	40.3	45.9	51.6	59.6	64.8	71.9
4	8.5	11.8	14.4	16.4	20.6	26.8	32.1	39.0	44.5	50.1	58.4	63.4	70.6
4.5	7.8	11.2	13.4	15.6	19.8	25.7	30.7	37.8	43.2	48.6	57.1	61.9	69.3
5	7.1	10.7	12.5	14.8	19.0	24.7	29.3	36.5	41.8	47.1	55.9	60.5	68.0
5.5	6.5	10.1	12.0	14.0	18.2	23.7	27.9	35.2	40.4	45.6	54.6	59.0	66.7
6	5.8	9.5											

Cable Gland Size	Available Entry Threads (Alternate Metric Thread Lengths Available)					Cable Bedding Diameter		Overall Cable Diameter		Armour Range †		Across Flats	Across Corners	Protrusion Length	Combined Ordering Reference (Stainless Steel Metric)			Shroud	Cable Gland Weight (Kgs)		
	Standard					Min	Max	Min	Max	Grooved Cone (X)	Stepped Cone (W)	Max	Max		Size	Type	Ordering Suffix				
	Metric	Thread Length (Metric)	NPT	Thread Length (NPT)	NPT																
20S16	M20	15.0	1/2"	19.9	3/4"	3.1	8.6	6.1	13.1	0.3	1.0	0.8	1.25	24.0	26.4	57.3	20S16	TE1FU	1RA4	PVC04	0.15
20S	M20	15.0	1/2"	19.9	3/4"	6.1	11.6	9.5	15.9	0.3	1.0	0.8	1.25	24.0	26.4	57.3	20S	TE1FU	1RA4	PVC04	0.15
20	M20	15.0	1/2"	19.9	3/4"	6.5	13.9	12.5	20.9	0.4	1.0	0.8	1.25	30.5	33.6	61.2	20	TE1FU	1RA4	PVC06	0.23
25S	M25	15.0	3/4"	20.2	1"	11.1	19.9	14.0	22.0	0.4	1.2	1.25	1.6	37.5	41.3	74.0	25S	TE1FU	1RA4	PVC09	0.34
25	M25	15.0	3/4"	20.2	1"	11.1	19.9	18.2	26.2	0.4	1.2	1.25	1.6	37.5	41.3	74.0	25	TE1FU	1RA4	PVC09	0.34
32	M32	15.0	1"	25.0	1 1/4"	17.0	26.2	23.7	33.9	0.4	1.2	1.6	2.0	46.0	50.6	78.2	32	TE1FU	1RA4	PVC11	0.55
40	M40	15.0	1 1/4"	25.6	1 1/2"	22.0	32.1	27.9	40.4	0.4	1.6	1.6	2.0	55.0	60.5	81.6	40	TE1FU	1RA4	PVC15	0.79
50S	M50	15.0	1 1/2"	26.1	2"	29.5	38.1	35.2	46.7	0.4	1.6	2.0	2.5	60.0	66.0	88.1	50S	TE1FU	1RA4	PVC18	1.00
50	M50	15.0	2"	26.9	2 1/2"	35.6	44.0	40.4	53.0	0.6	1.6	2.0	2.5	70.1	77.1	91.2	50	TE1FU	1RA4	PVC21	1.37
63S	M63	15.0	2"	26.9	2 1/2"	40.1	49.9	45.6	59.4	0.6	1.6	2.0	2.5	75.0	82.4	90.5	63S	TE1FU	1RA4	PVC23	1.50
63	M63	15.0	2 1/2"	39.9	3"	47.2	55.9	54.6	65.8	0.6	1.6	2.0	2.5	80.0	88.0	90.3	63	TE1FU	1RA4	PVC25	1.56
75S	M75	15.0	2 1/2"	39.9	3"	52.8	61.9	59.0	72.0	0.6	1.6	2.0	2.5	90.0	99.0	104.7	75S	TE1FU	1RA4	PVC28	2.45
75	M75	15.0	3"	41.5	3 1/2"	59.1	67.9	66.7	78.4	0.6	1.6	2.5	3.0	100.0	110.0	110.8	75	TE1FU	1RA4	PVC30	3.15
90	M90	24.0	3 1/2"	42.8	4"	66.6	78.6	76.2	90.3	0.8	1.6	3.15	4.0	115.0	126.5	135.5	90	TE1FU	1RA4	PVC32	4.62
100	M100	24.0	4"	44.0	4"	76.0	90.9	86.1	101.4	0.8	1.6	3.15	4.0	127.0	139.7	126.8	100	TE1FU	1RA4	LSF33	4.95
115	M115	24.0	4"	44.0	5"	86.0	97.9	101.5	110.2	0.8	1.6	3.15	4.0	138.0	151.8	157.5	115	TE1FU	1RA4	LSF34	7.60
130	M130	24.0	5"	46.8	-	97.0	114.9	110.2	123.2	0.8	1.6	3.15	4.0	157.0	172.7	164.5	130	TE1FU	1RA4	LSF35	8.73

† Dimensions are displayed in millimetres unless otherwise stated

** Insert "PB" into the code for TE1FUPB glands e.g. 20TE1FUPB1RA4

*Please note that the overall maximum cable bedding diameter for "PB" variants should be reduced by 1mm to allow for the inner lead sheath.

*Stepped cone is for single wire armour and grooved cone is for all other armours



Glasshouse Street • St. Peters • Newcastle upon Tyne • NE6 1BS
 Tel: +44 191 265 7411 • Fax: +44 1670 715 646
 E-Mail: customerservices@cmp-products.co.uk • Web: www.cmp-products.com

www.cmp-products.com

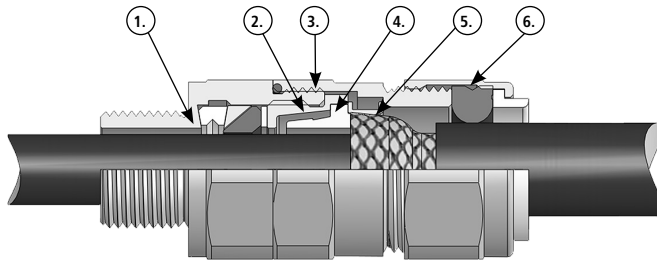
F1463		
Certificate	Revision	Date
UKEX	0	04/21
IFS	15	03/24
ATEX / IECEx	7	04/19
CSA / cCSAus	6	1/19

Cable Gland Selection Table

INSTALLATION INSTRUCTIONS FOR CMP CABLE GLAND TE1FU & TE1FUPB

CABLE GLAND COMPONENTS

1. Entry Item
2. Compensating Sleeve
3. Body
4. Reversible Armour Cone
5. AnyWay Clamping Ring
6. Outer Seal Nut

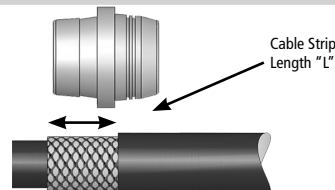


PLEASE READ ALL INSTRUCTIONS CAREFULLY BEFORE BEGINNING THE INSTALLATION



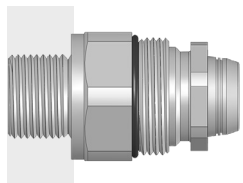
1. Separate the gland into two sub-assemblies, A and B, by unscrewing the body (3) from the entry item (1). Note that items (4) and (5) are loose items.

2. Prepare the cable by stripping back the cable outer sheath and armour to suit the equipment geometry. Expose the armour by stripping back the outer sheath further using the table below as a guide.

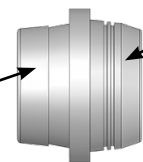


CABLE GLAND SIZE	20S/16, 20S, 20	25S, 25, 32, 40	50S, 50, 63S, 63	75S, 75, 90, 100, 115, 130
CABLE STRIP LENGTH "L"	12 mm (0.472 inches)	15 mm (0.591 inches)	18 mm (0.709 inches)	20 mm (0.787 inches)

3. Secure the entry components (sub-assembly A) into the equipment. **(Not for remote installation)** Pass the sub-assembly B (outer seal first) and AnyWay clamping ring (5) over the cable. Insert the reversible armour cone (4) in the sub-assembly A, orientation to suit cable (see below)



Stepped side of cone outwards - to terminate SWA cable.

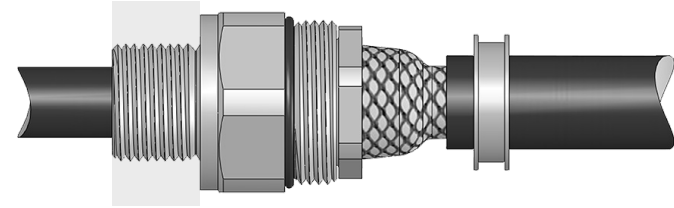


Grooved side of cone outwards - to terminate braid, strip armour, pliable wire or tape armour.

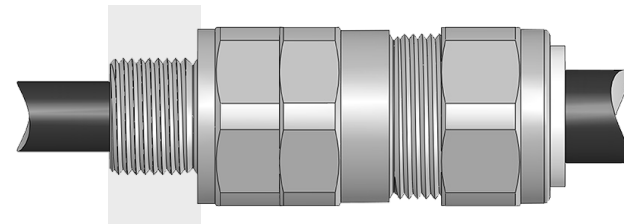
4. Pass the cable through sub-assembly A, spacing the armour or braid evenly around the cone. Whilst continuing to push the cable forward to keep the cable braid or armour in contact with the cone, tighten the compensating sleeve (2) into the entry item (1) until all the threads are used.

Note : The internal compensator will prevent the cable gland inner seal from being over-tightened onto the cable inner sheath.

The inner sheath of the TE1FUPB gland contains a device to automatically make an electrical contact with the lead sheath on the cable as the cable is installed.



5. Terminate the cable by tightening the body (3) onto the entry item (1) using a spanner on each part. Tighten the body until the body and entry components are metal to metal and cannot be tightened further.



6. Only using finger pressure, tighten the outer seal nut assembly (8) until light resistance to tightening is met.

Then either use the outer seal tightening guide tape or table on the rear of the page to determine how much further to tighten the seal using a spanner (using the outer seal tightening guide is recommended).

Wrap the outer seal tightening guide tape around the cable to show the amount of spanner turns needed (as shown here). Make sure the correct side of the outer seal tightening guide tape is used depending on the cable gland size.

