

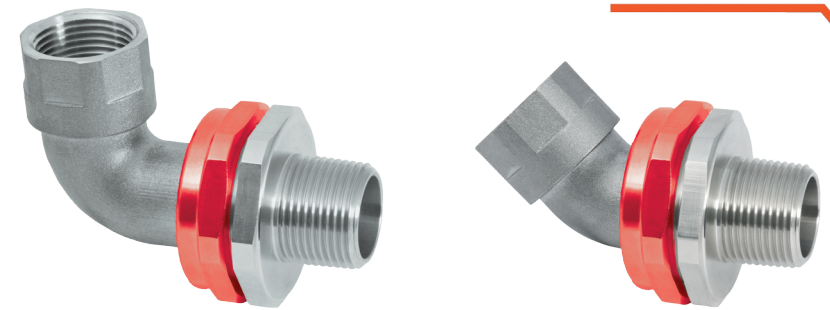


INSTALLATION INSTRUCTIONS FOR UNION TYPE PX789REX & PX784REX

UNION TYPE PX789 FOR CONNECTING CONDUITS TO ENCLOSURES OR CONDUITS TO EACH OTHER USING RAPIDEX RESIN AT 90° AND 45° ANGLES IN EXPLOSIVE ATMOSPHERES.

INCORPORATING EU DECLARATION OF CONFORMITY TO DIRECTIVE [2014/34/EU]

TYPE PX789REX & PX784REX UNION



CMP Document No. F1482 Issue 4, IECEx Issue 3, CSA Issue 3

TECHNICAL DATA

ADAPTOR TYPE : PX789REX & PX784REX
INGRESS PROTECTION : IP66
PROCESS CONTROL SYSTEM : BS EN ISO 9001 - 2000
 : ISO/IEC 80079-34:2011

EXPLOSIVE ATMOSPHERES CLASSIFICATION

ATEX CERTIFICATION No : SIRA10ATEX1306U
ATEX CERTIFICATION CODE : II 2 GD Ex d IIC Gb, Ex e IIC Gb, Ex ta IIIC Da IP6X
 : IM2 Ex d I Mb / Ex e I Mb
IECEx CERTIFICATION No : IECEx SIR.10.0148U
IECEx CERTIFICATION CODE : Ex d IIC Gb, Ex e IIC Gb, Ex d I Mb, Ex e I Mb, Ex ta IIIC Da IP6X
cCSAus CERTIFICATION No : 1055233
CODE OF PROTECTION : Class I, Div 1 & 2, Groups A,B,C,D; Enclosure Type 4X : Class I Zone 1, AEx de II; Ex de II

INSTALLATION INSTRUCTIONS

Installation should only be performed by a competent person using the correct tools. Spanners should be used for tightening. Read all instructions before beginning installation.

SPECIAL CONDITIONS FOR SAFE USE

Only one union is to be used with any single cable entry on the associated equipment.

ACCESSORIES

The following accessories are available from CMP Products, as optional extras, to assist with fixing, sealing and earthing :-
 Locknut | Earth Tag | Serrated Washer | Entry Thread (I.P.) Sealing Washer

Product Selection Table														
Ordering Reference (Brass, Metric)	METRIC			NPT			Diameter over Cores	Max. number of Cores	Max Protusion Length	Max Overhang Length	Across Flats Hex	Across Corners Ø	Installation Torque (Nm)	
	Male Forward Thread Size	Minimum Thread Length	Female Rear Thread Size	Ordering Reference (Brass, NPT)	Male Forward NPT Thread Size	Minimum NPT Thread Length (in)								Female Rear Thread Size
PX789REXM2M2	M20 X 1.5	15.0	M20 X 1.5	PX789REXD1T11	1/2"	0.79	1/2"	12.6	11	62.9	63.8	46.0	50.6	7
PX789REXM3M3	M25 X 1.5	15.0	M25 X 1.5	PX789REXD2T2	3/4"	0.80	3/4"	17.5	21	70.6	69.5	50.0	55.0	10
PX789REXM4M4	M32 X 1.5	15.0	M32 X 1.5	PX789REXD3T3	1"	0.98	1"	23.6	38	75.7	78.0	60.0	66.0	15
PX789REXM5M5	M40 X 1.5	15.0	M40 X 1.5	PX789REXD4T4	1-1/4"	1.01	1-1/4"	30.0	59	83.7	84.8	65.0	71.5	25
PX789REXM6M6	M50 X 1.5	15.0	M50 X 1.5	PX789REXD5T5	1-1/2"	1.03	1-1/2"	41.0	59	95.9	96.3	75.0	82.5	30
PX789REXM7M7	M63 X 1.5	15.0	M63 X 1.5	PX789REXD6T6	2"	1.06	2"	53.7	89	108.8	115.1	90.2	99.2	45

All dimensions shown are in millimetres unless otherwise stated

For material options please add the following suffix to the Ordering Reference, Brass (no suffix required), Nickel Plated Brass "5", 316 Grade Stainless Steel "4", Copper Free Aluminium "1"

Product Selection Table														
Ordering Reference (Brass, Metric)	METRIC			NPT			Diameter over Cores	Max. number of Cores	Max Protusion Length	Max Overhang Length	Across Flats Hex	Across Corners Ø	Installation Torque (Nm)	
	Male Forward Thread Size	Minimum Thread Length	Female Rear Thread Size	Ordering Reference (Brass, NPT)	Male Forward NPT Thread Size	Minimum NPT Thread Length (in)								Female Rear Thread Size
PX784REXM2M2	M20 X 1.5	15.0	M20 X 1.5	PX784REXD1T11	1/2"	0.79	1/2"	12.6	11	60.6	55.8	46.0	50.6	7
PX784REXM3M3	M25 X 1.5	15.0	M25 X 1.5	PX784REXD2T2	3/4"	0.80	3/4"	17.5	21	65.9	61.2	50.0	55.0	10
PX784REXM4M4	M32 X 1.5	15.0	M32 X 1.5	PX784REXD3T3	1"	0.98	1"	23.6	38	69.5	70.2	60.0	66.0	15
PX784REXM5M5	M40 X 1.5	15.0	M40 X 1.5	PX784REXD4T4	1-1/4"	1.01	1-1/4"	30.0	59	74.9	76.4	65.0	71.5	25
PX784REXM6M6	M50 X 1.5	15.0	M50 X 1.5	PX784REXD5T5	1-1/2"	1.03	1-1/2"	41.0	59	93.5	88.0	75.0	82.5	30
PX784REXM7M7	M63 X 1.5	15.0	M63 X 1.5	PX784REXD6T6	2"	1.06	2"	53.7	89	102.7	103.4	90.2	99.2	45

All dimensions shown are in millimetres unless otherwise stated

For material options please add the following suffix to the Ordering Reference, Brass (no suffix required), Nickel Plated Brass "5", 316 Grade Stainless Steel "4", Copper Free Aluminium "1"

CMP Products Limited on its sole responsibility declares that the equipment referred to herein conforms to the requirements of the ATEX Directive 2014/34/EU and the following standards:-

EN60079-0:2009, EN 60079-1:2007, EN60079-7:2007, EN60079-31:2009

David Willcock - Certification Engineer (Authorised Person)
 CMP Products Limited, Cramlington, NE23 1WH, UK
 24th June 2015

Glasshouse Street • St. Peters • Newcastle upon Tyne • NE6 1BS

Tel: +44 191 265 7411 • Fax: +44 1670 715 464

E-Mail: customerservices@cmp-products.co.uk • Web: www.cmp-products.com



CE 0518

Notified Body: Sira Certification Service, Unit 6, Hawarden Industrial Park, Hawarden, CH5 3US, UK

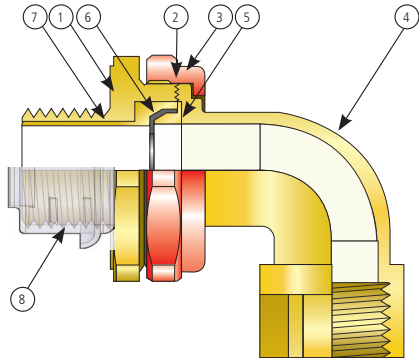
www.cmp-products.com



Logo's shown for illustration purposes only. Please check certification for details

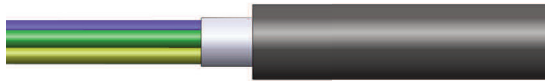
INSTALLATION FOR CMP UNION TYPES PX789REX & PX784REX

- 1. Entry Item
- 2. Serrated Flamepath
- 3. Nut
- 4. 90° (or 45°) Conduit Connector
- 5. Washer
- 6. Resin Dam
- 7. Compound Tube
- 8. Thread Shield



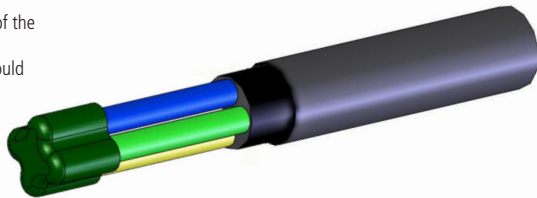
PLEASE READ ALL INSTRUCTIONS CAREFULLY BEFORE BEGINNING THE INSTALLATION

1. Prepare the cable by removing the outer sheath from the cores so that they are exposed within the Compound Tube when finally assembled.

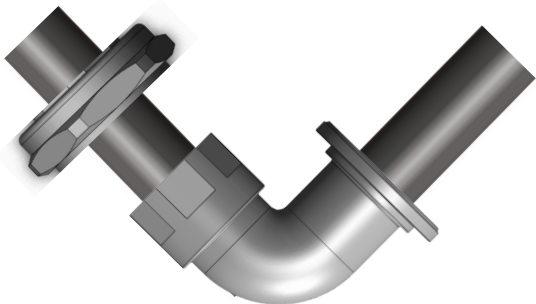


2. Remove any bedding or fillers from around the cable cores. If the cable cores have screens, these should be unwound and then twisted together to form a single core. This single core and/or any drain wires present should be sleeved with some heat shrink tubing.

Electrical tape **MUST** be wrapped around the tips of the cable cores. This is to ensure the cable cores are together and also to cover any sharp edges that could potentially tear the Resin Dam during installation.



3. Unscrew the Nut (3) and the Conduit connector (4) and pass down the cable/cores

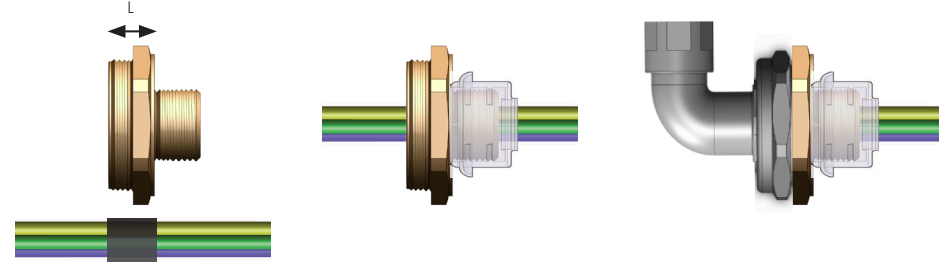


4. Feed the cables/cores through the Entry Item / Resin Dam / Washer

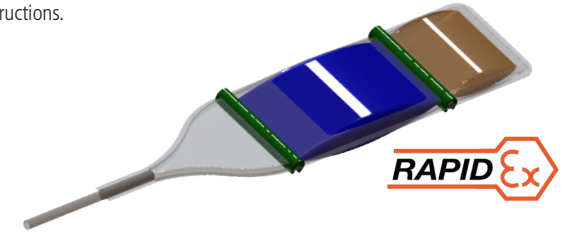
If the installation uses only cores (i.e. no cable sheath) then electrical tape must be wrapped around the cores at the position at which it will engage the resin dam.

Use this guide to position the tape as shown (guide length "L")

Reassemble the Union



5. Mix the Resin and apply as per RapidEx instructions.



6. When the Resin has cured, the Entry Item (1) should be removed from the assembly and fully tightened into the apparatus.

Tighten the Conduit Connector (4) onto the conduit and then tighten to the Entry Item (1) using the Nut (3) to complete the installation.

