

TITAN (SCSS)

The TITAN cable support cleat has been designed, constructed and tested in accordance with the international standard IEC 61914 cable cleats for electrical installations; to ensure the securing and retention of cables, without sustaining damage to the cable(s).

Designed to support cables in high voltage applications, the TITAN allows cable sag between fixed anchor points, where desirable. Sagging cable between fixed anchor points is a method of installation where the cable is allowed to hang between the cleats. This area of excess cable will accommodate thermal expansion and contraction of the cable in service, without putting undue stress on the anchor points.

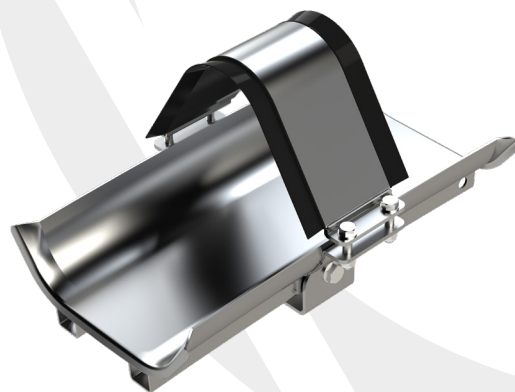
The TITAN adds additional support to the cable at the anchor points, ensuring there is no excessive pressure or point loading to the cable in these critical areas. The system is designed so that the support arm and cleat area can swivel and rotate, allowing flexibility to the installer.

The TITAN comes in three lengths; 400mm, 600mm and 800mm. This will accommodate larger cable cleat fixing centers, whilst reducing the pressure applied to the cable from its own weight.

The product can be fabricated to suit any installation parameters. Please contact CMP to discuss your specific project requirements.

FEATURES

- Third party tested in accordance with IEC 61914
- Highly corrosion resistant in stainless steel
- Operating temperature -60°C to +90°C
- Allows cable sag between fixed anchor points
- Increased support reducing pressure on cable
- Strong heavy duty construction



TECHNICAL DATA & CLASSIFICATION

TYPE	IEC 61914 6.1.3 Composite
DESIGN SPECIFICATION	IEC 61914
TEMPERATURE FOR PERMANENT APPLICATION	-60°C to +90°C IEC 61914 clause 6.2
NEEDLE FLAME TEST	Pass - 120 seconds IEC 61914 clause 10.0, 10.1, IEC 60695-11-5
IMPACT RESISTANCE	Pass - Very Heavy IEC 61914 clause 6.3, 6.3.5, 9.2
MATERIAL	Stainless steel
LINER MATERIAL	FR LSF / LSOH Polymer
CABLE FORMATION	Trefoil

SHORT CIRCUIT TESTING TO IEC 61914 - CLAUSE 9.5

TREFOIL FORMATION	
One Short Circuit 8.4m, with intermediate restraints	Two Short Circuit 8.4m, with intermediate restraints
142mm conductor centres	142mm conductor centres
1 sec	1 sec
183kA Peak 72 kA r.m.s	153 kA Peak 60 kA r.m.s

TITAN (SCSS)

CABLE CLEAT SELECTION TABLE										
TITAN PART NO.	CABLE Ø RANGE TAKE (mm)	LENGTH (mm)	DIMENSIONS (mm)						BASE FIXING	WEIGHT (g)
			H	W	L	L2	W2	P		
SCSS-100110-400	100-110	400	287.8	298.4	400	90	170	120	2 x M16	7541
SCSS-100110-600	100-110	600	287.8	298.4	600	90	170	120	2 x M16	9448
SCSS-100110-800	100-110	800	287.8	298.4	800	90	170	120	2 x M16	11337
SCSS-110120-400	110-120	400	306.4	318.5	400	90	180	120	2 x M16	8560
SCSS-110120-600	110-120	600	306.4	318.5	600	90	180	120	2 x M16	10693
SCSS-110120-800	110-120	800	306.4	318.5	800	90	180	120	2 x M16	12704
SCSS-120130-400	120-130	400	325.1	338.7	400	90	190	120	2 x M16	8404
SCSS-120130-600	120-130	600	325.1	338.7	600	90	190	120	2 x M16	10560
SCSS-120130-800	120-130	800	325.1	338.7	800	90	19	120	2 x M16	12692
SCSS-130140-400	130-140	400	343.7	358.8	400	90	200	120	2 x M16	8837
SCSS-130140-600	130-140	600	343.7	358.8	600	90	200	120	2 x M16	11122
SCSS-130140-800	130-140	800	343.7	358.8	800	90	200	120	2 x M16	13125
SCSS-140150-400	140-150	400	362.4	379	400	90	210	140	2 x M16	9268
SCSS-140150-600	140-150	600	362.4	379	600	90	210	140	2 x M16	12101
SCSS-140150-800	140-150	800	362.4	379	800	90	210	140	2 x M16	13934
SCSS-150160-400	150-160	400	381.1	399.1	400	90	220	140	2 x M16	9702
SCSS-150160-600	150-160	600	381.1	399.1	600	90	220	140	2 x M16	12238
SCSS-150160-800	150-160	800	381.1	399.1	800	90	220	140	2 x M16	14739
SCSS-160170-400	160-170	400	399.7	419.3	400	90	230	140	2 x M16	10134
SCSS-160170-600	160-170	600	399.7	419.3	600	90	230	140	2 x M16	12797
SCSS-160170-800	160-170	800	399.7	419.3	800	90	230	140	2 x M16	15281
SCSS-170180-400	170-180	400	418.4	439.4	400	90	240	160	2 x M16	10568
SCSS-170180-600	170-180	600	418.4	439.4	600	90	240	160	2 x M16	13354
SCSS-170180-800	170-180	800	418.4	439.4	800	90	240	160	2 x M16	15961
SCSS-180190-400	180-190	400	437	459.6	400	90	250	160	2 x M16	11002
SCSS-180190-600	180-190	600	437	459.6	600	90	250	160	2 x M16	13917
SCSS-180190-800	180-190	800	437	459.6	800	90	250	160	2 x M16	16640
SCSS-190200-400	190-200	400	455.7	479.8	400	90	260	160	2 x M16	11444
SCSS-190200-600	190-200	600	455.7	479.8	600	90	260	160	2 x M16	14478
SCSS-190200-800	190-200	800	455.7	479.8	800	90	260	160	2 x M16	17494

