

# THORUS (SSCAL)

The THORUS cable support cleat has been designed, constructed and tested in accordance with the International Standard IEC 61914 cable cleats for electrical installations; to ensure the securing and retention of cables, without sustaining damage to the cable(s).

Designed to support cables in high voltage applications, the THORUS allows cable sag between fixed anchor points, where desirable. Sagging cable between fixed anchor points is a method of installation where the cable is allowed to hang between the cleats. This area of excess cable will accommodate thermal expansion and contraction of the cable in service, without putting undue stress on the anchor points.

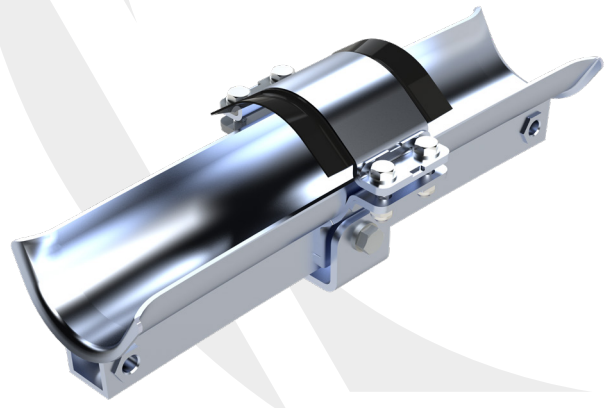
The THORUS adds additional support to the cable at the anchor points, ensuring there is no excessive pressure or point loading to the cable in these critical areas. The system is designed so that the support arm and cleat area can swivel and rotate, allowing flexibility to the installer.

The THORUS comes in three lengths; 400mm, 600mm and 800mm. This will accommodate larger cable cleat fixing centers, whilst reducing the pressure applied to the cable from its own weight.

The product can be fabricated to suit any installation parameters. Please contact CMP to discuss your specific project requirements.

## FEATURES

- Third party tested in accordance with IEC 61914
- Corrosion resistant aluminium
- Sunlight (UV) resistant
- Operating temperature -60°C to +90°C
- Allows cable sag between fixed anchor points
- No excessive pressure points to the cable
- Increased support reducing pressure on cable
- Strong but lightweight construction



## TECHNICAL DATA & CLASSIFICATION

TYPE	IEC 61914 6.1.3 Composite
DESIGN SPECIFICATION	IEC 61914
TEMPERATURE FOR PERMANENT APPLICATION	-60°C to +90°C IEC 61914 clause 6.2
NEEDLE FLAME TEST	Pass - 120 seconds IEC 61914 clause 10.0, 10.1, IEC 60695-11-5
IMPACT RESISTANCE	Pass - Very Heavy IEC 61914 clause 6.3, 6.3.5, 9.2
MATERIAL	5000 & 6000 Series Aluminium
LINER MATERIAL	FR LSF / LSOH Polymer
CABLE FORMATION	Single/Parallel

## SHORT CIRCUIT TESTING TO IEC 61914 - CLAUSE 9.5

PARALLEL FORMATION	
One short circuit 8.4m, with intermediate restraints	Two short circuit 8.4m, with intermediate restraints
800mm conductor centres	800mm conductor centres
1 sec	1 sec
168 kA Peak	124 kA Peak
66 kA r.m.s	48 kA r.m.s

# THORUS (SSCAL)

CABLE CLEAT SELECTION TABLE

THORUS PART NO.	CABLE RANGE TAKE (mm)	Length (mm)	H	W	L1	L2	W2	BASE FIXING	WEIGHT (g)
SSCAL-100110-400	100-110	400	202	195	400	90	84.8	1 x M16	3557
SSCAL-100110-600	100-110	600	202	195	600	90	84.8	1 x M16	4573
SSCAL-100110-800	100-110	800	202	195	800	90	84.8	1 x M16	5589
SSCAL-110120-400	110-120	400	212	205	400	90	84.8	1 x M16	3670
SSCAL-110120-600	110-120	600	212	205	600	90	84.8	1 x M16	4722
SSCAL-110120-800	110-120	800	212	205	800	90	84.8	1 x M16	5772
SSCAL-120130-400	120-130	400	222	215	400	90	84.8	1 x M16	3783
SSCAL-120130-600	120-130	600	222	215	600	90	84.8	1 x M16	4866
SSCAL-120130-800	120-130	800	222	215	800	90	84.8	1 x M16	5949
SSCAL-130140-400	130-140	400	232	225	400	90	84.8	1 x M16	3898
SSCAL-130140-600	130-140	600	232	225	600	90	84.8	1 x M16	5015
SSCAL-130140-800	130-140	800	232	225	800	90	84.8	1 x M16	6136
SSCAL-140150-400	140-150	400	242	235	400	90	84.8	1 x M16	4013
SSCAL-140150-600	140-150	600	242	235	600	90	84.8	1 x M16	5162
SSCAL-140150-800	140-150	800	242	235	800	90	84.8	1 x M16	6312
SSCAL-150160-400	150-160	400	252	245	400	90	84.8	1 x M16	4130
SSCAL-150160-600	150-160	600	252	245	600	90	84.8	1 x M16	5313
SSCAL-150160-800	150-160	800	252	245	800	90	84.8	1 x M16	6498
SSCAL-160170-400	160-170	400	262	255	400	90	84.8	1 x M16	4246
SSCAL-160170-600	160-170	600	262	255	600	90	84.8	1 x M16	5462
SSCAL-160170-800	160-170	800	262	255	800	90	84.8	1 x M16	6682
SSCAL-170180-400	170-180	400	272	265	400	90	84.8	1 x M16	4362
SSCAL-170180-600	170-180	600	272	265	600	90	84.8	1 x M16	5617
SSCAL-170180-800	170-180	800	272	265	800	90	84.8	1 x M16	6874
SSCAL-180190-400	180-190	400	282	275	400	90	84.8	1 x M16	4482
SSCAL-180190-600	180-190	600	282	275	600	90	84.8	1 x M16	5764
SSCAL-180190-800	180-190	800	282	275	800	90	84.8	1 x M16	7058
SSCAL-190200-400	190-200	400	292	285	400	90	84.8	1 x M16	4595
SSCAL-190200-600	190-200	600	292	285	600	90	84.8	1 x M16	5917
SSCAL-190200-800	190-200	800	292	285	800	90	84.8	1 x M16	7236

