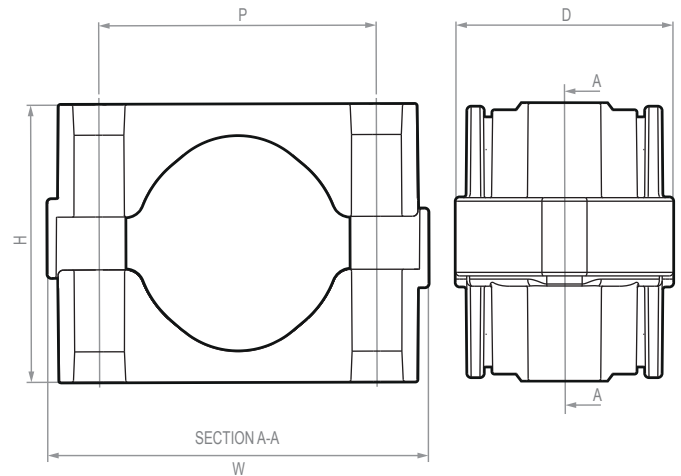
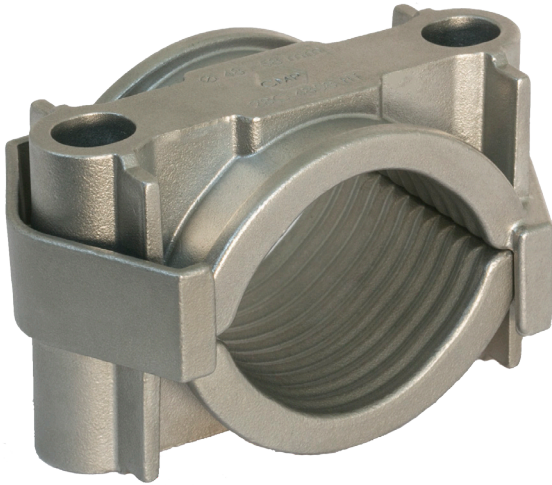


Themis (2BCHT)



The CMP Products Themis Heavy Duty, Two Bolt, High Temperature Fire Rated Stainless Steel single cable cleat which has been designed, constructed, and tested in accordance with the International Standard 'cable cleats for Electrical Installations' (IEC 61914:2015). It ensures the retention and securing of single cables, without damaging or deforming the cable.

These Fire Rated cable cleats can be used with fire performance cables to ensure the safe retention and securing of single cables in the event of a wiring system being affected by fire. These fire resisting supports help to maintain the electrical systems integrity for any critical circuits during an emergency situation to enable safe evacuation. The cable cleat is manufactured from High Temperature Stainless Steel making it suitable for both indoor and outdoor applications.

Due to its unique twin arc internal patent pending design profile it exhibits excellent retention, limiting both the axial and lateral movement. The Themis Two Bolt cable cleats have an excellent range take and are suitable for cable diameters of 38mm up to 97mm in only five sizes. This cable cleat has two M12 clearance holes for securing it to a mounting surface, which allows for either M10 or M12 fasteners to be used.

Technical Data & Classification

| | |
|---------------------------------------|--|
| Type | 6.1.1 Metallic 2BCHT - Two Bolt High Temperature Stainless Steel Cable Cleat |
| Design Specification | IEC 61914:2015 |
| Temperature for permanent application | -60°C to +150°C IEC 61914:2015 clause / part 6.2 |
| Temperature for 2 hour excursion | 950°C BS8434 (Fire, shock & water) |
| Needle Flame Test | Pass IEC 61914:2015 clause 10.0, 10.1, IEC 60695-11-5 |
| Lateral Load Test | 25kN IEC 61914:2015 clause 9.3 |
| Axial Load Test | 5kN IEC 61914:2015 clause 9.4 |
| Impact Resistance | Pass - Very Heavy IEC 61914:2015 clause 6.3, 6.3.5, 9.2 |
| Material | Cast High Temperature Stainless Steel |
| Material Colour | Silver / grey |

Features

- Cast High Temperature Stainless Steel
- Operating temperature -60°C to +150°C
- 2 hour withstand excursion to 950°C
- Fire tested to BS5839 / BS8491 / BSEN50200 / BS8434
- 38 - 97mm cable range take in 5 sizes
- Two bolt fixing design
- Can be double stacked
- Excellent axial & lateral load retention
- Corrosion resistant

Cable cleat selection table

| Themis Part No. | Cable Ø range take (mm) | Dimensions mm | | | | | Weight (g) |
|-----------------|-------------------------|---------------|-----|----|-----|---------------|------------|
| | | W | H | D | P | Fixing Hole Ø | |
| 2BC038048HT | 38 - 48 | 96 | 68 | 61 | 67 | 2 x M10 / M12 | 742 |
| 2BC048058HT | 48 - 58 | 107 | 78 | 61 | 78 | 2 x M10 / M12 | 900 |
| 2BC058070HT | 58 - 70 | 119 | 91 | 61 | 90 | 2 x M10 / M12 | 1102 |
| 2BC070083HT | 70 - 83 | 133 | 104 | 61 | 104 | 2 x M10 / M12 | 1324 |
| 2BC083097HT | 83 - 97 | 147 | 118 | 61 | 118 | 2 x M10 / M12 | 1554 |

Fasteners required to secure the cable cleat to the support structure are not included with the ordering references shown in the selection table but can be supplied on request.