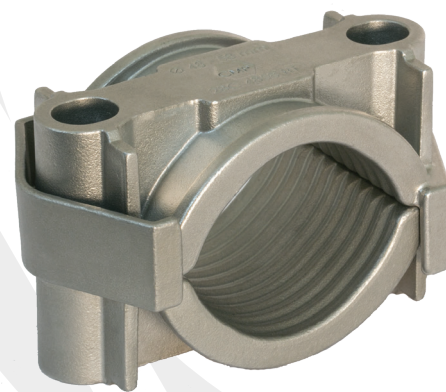


THEMIS (2BCHT)

The Themis Heavy Duty, Two Bolt, High Temperature Fire Rated Stainless Steel single cable cleat which has been designed, constructed, and tested in accordance with the International Standard IEC 61914: Cable cleats for electrical installations. It ensures the retention and securing of single cables, without damaging or deforming the cable.

These Fire Rated cable cleats can be used with fire performance cables to ensure the safe retention and securing of single cables in the event of a wiring system being affected by fire. These fire resisting supports help to maintain the electrical systems integrity for any critical circuits during an emergency situation to enable safe evacuation. The cable cleat is manufactured from Stainless Steel 316L making it suitable for both indoor and outdoor applications.

Due to its unique twin arc internal patent pending design profile it exhibits excellent retention, limiting both the axial and lateral movement. The Themis Two Bolt cable cleats have an excellent range take and are suitable for cable diameters of 38mm up to 109mm in only six sizes. This cable cleat has two clearance holes for securing it to a mounting surface, which depending on cleat size, allows for either M10, M12 or M14 fasteners to be used.



THEMIS (2BCHT)

FEATURES

- 316L Stainless Steel
- Operating temperature -60°C to +250°C
- Surpasses requirements of Fire testing BS5839 / BS8491 / EN50200 / BS8434 / AS-NZS 3013 (1,200°C) (Fire, shock & water)
- 38 - 109mm cable range take in 6 sizes
- Can be stacked
- Excellent axial & lateral load retention
- Corrosion resistant

BS 5839 'Fire detection and fire alarm systems for buildings. Code of practice for design, installation, commissioning and maintenance of systems in non-domestic premises'

States that "Methods of cable support should be non-combustible and such that circuit integrity will not be reduced below that afforded by the cable used, and should withstand a similar temperature and duration to that of the cable, while maintaining adequate support"

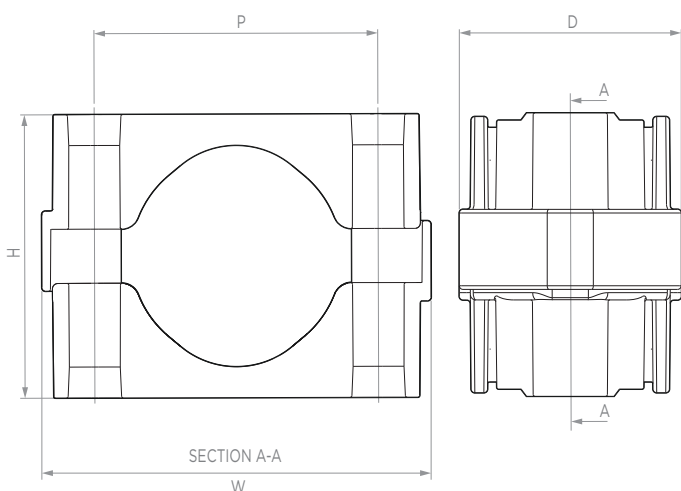
To adhere to this BSI standard fire rated Cable Cleats must be used to support the cable in the event of a fire.

TECHNICAL DATA & CLASSIFICATION

TYPE	6.1.1 Metallic 2BCHT - Two Bolt High Temperature Stainless Steel Cable Cleat
DESIGN SPECIFICATION	IEC 61914
TEMPERATURE FOR PERMANENT APPLICATION	-60°C to +250°C IEC 61914
FIRE TESTED	Surpasses requirements of Fire testing BS5839/BS8491/EN50200/BS8434/AS-NZS 3013 (1,200°C) (Fire, shock & water)
NEEDLE FLAME TEST	Pass - 120 second flame application time IEC 61914, IEC 60695-11-5
LATERAL LOAD TEST	Refer to CMP Products, IEC 61914
AXIAL LOAD TEST	Refer to CMP Products, IEC 61914
IMPACT RESISTANCE	Pass - Very Heavy IEC 61914
MATERIAL	316L Stainless Steel
MATERIAL COLOUR	Silver / grey

For information regarding short circuit ratings please contact CMP Products.

CABLE CLEATS



CABLE CLEAT SELECTION TABLE

THEMIS PART NO.	CABLE Ø RANGE TAKE (MM)	DIMENSIONS MM					FIXING HOLE Ø	WEIGHT (g)
		W	H	D	P			
2BC038048HT	38 - 48	96	68	61	67	2 x M10 / M12	742	
2BC048058HT	48 - 58	107	78	61	78	2 x M10 / M12	900	
2BC058070HT	58 - 70	119	91	61	90	2 x M10 / M12	1102	
2BC070083HT	70 - 83	133	104	61	104	2 x M10 / M12	1324	
2BC083097HT	83 - 97	147	118	61	118	2 x M10 / M12	1554	
2BC096109HT	96-109	160	130	61	131	2 x M12 / M14	1860	

Coatings are available upon request by adding the following suffixes to the ordering reference - EC for epoxy coating, PC for polyester coating and TC for thermoplastic coating. Example order reference for epoxy coating suffix EC (2BC038048HTEC). Fasteners required to secure the cable cleat to the support structure are not included but can be supplied upon request - see cleat fixing pack page TDS752. Isolation/separation pads (to prevent corrosion between two dissimilar metals) are not included but can be supplied on request - see isolation/separation pad page TDS733.