

# SPHINX (SCAL)

The SPHINX cable support cleat has been designed, constructed and tested in accordance with the international standard IEC 61914 cable cleats for electrical installations; to ensure the securing and retention of cables, without sustaining damage to the cable(s).

Designed to support cables in high voltage applications, the SPHINX allows cable sag between fixed anchor points, where desirable. Sagging cable between fixed anchor points is a method of installation where the cable is allowed to hang between the cleats. This area of excess cable will accommodate thermal expansion and contraction of the cable in service, without putting undue stress on the anchor points.

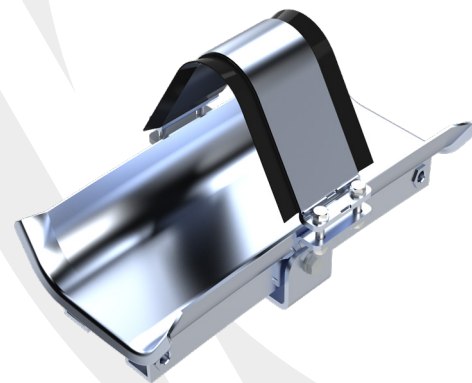
The SPHINX adds additional support to the cable at the anchor points, ensuring there is no excessive pressure or point loading to the cable in these critical areas. The system is designed so that the support arm and cleat area can swivel and rotate, allowing flexibility to the installer.

The SPHINX comes in three lengths; 400mm, 600mm and 800mm. This will accommodate larger cable cleat fixing centers, whilst reducing the pressure applied to the cable from its own weight.

The product can be fabricated to suit any installation parameters. Please contact CMP to discuss your specific project requirements.

## FEATURES

- Third party tested in accordance with IEC 61914
- Corrosion resistant aluminium
- Sunlight (UV) resistant
- Operating temperature -60°C to +90°C
- Allows cable sag between fixed anchor points
- No excessive pressure points to the cable
- Increased support reducing pressure on cable
- Strong but lightweight construction



## TECHNICAL DATA & CLASSIFICATION

TYPE	IEC 61914 6.1.3 Composite
DESIGN SPECIFICATION	IEC 61914
TEMPERATURE FOR PERMANENT APPLICATION	-60°C to +90°C IEC 61914 clause 6.2
NEEDLE FLAME TEST	Pass - 120 seconds IEC 61914 clause 10.0, 10.1, IEC 60695-11-5
IMPACT RESISTANCE	Pass - Very Heavy IEC 61914 clause 6.3, 6.3.5, 9.2
MATERIAL	5000 & 6000 Series Aluminium
LINER MATERIAL	FR LSF / LSOH Polymer
CABLE FORMATION	Trefoil

## SHORT CIRCUIT TESTING TO IEC 61914 - CLAUSE 9.5

TREFOIL FORMATION	
One short circuit 8.4m, with intermediate restraints	Two short circuit 8.4m, with intermediate restraints
142mm conductor centres	142mm conductor centres
1 sec	1 sec
153 kA Peak	104 kA Peak
60 kA r.m.s	40 kA r.m.s

# SPHINX (SCAL)

CABLE CLEAT SELECTION TABLE

SPHINX PART NO.	CABLE Ø RANGE TAKE (mm)*	LENGTH (MM)	DIMENSIONS mm						BASE FIXING Ø	WEIGHT (g)
			H	W	L	L2	W2	P		
SCAL-100110-400	100-110	400	300	302	400	90	197	120	2 x M16	6197
SCAL-100110-600	100-110	600	300	302	600	90	197	120	2 x M16	8074
SCAL-100110-800	100-110	800	300	302	800	90	197	120	2 x M16	9923
SCAL-110120-400	110-120	400	320	324	400	90	207	120	2 x M16	6424
SCAL-110120-600	110-120	600	320	324	600	90	207	120	2 x M16	8346
SCAL-110120-800	110-120	800	320	324	800	90	207	120	2 x M16	10248
SCAL-120130-400	120-130	400	339	344	400	90	217	120	2 x M16	6658
SCAL-120130-600	120-130	600	339	344	600	90	217	120	2 x M16	8636
SCAL-120130-800	120-130	800	339	344	800	90	217	120	2 x M16	10594
SCAL-130140-400	130-140	400	356	364	400	90	227	120	2 x M16	6893
SCAL-130140-600	130-140	600	356	364	600	90	227	120	2 x M16	8926
SCAL-130140-800	130-140	800	356	364	800	90	227	120	2 x M16	10938
SCAL-140150-400	140-150	400	376	385	400	90	237	140	2 x M16	7127
SCAL-140150-600	140-150	600	376	385	600	90	237	140	2 x M16	9406
SCAL-140150-800	140-150	800	376	385	800	90	237	140	2 x M16	11284
SCAL-150160-400	150-160	400	395	405	400	90	247	140	2 x M16	7362
SCAL-150160-600	150-160	600	395	405	600	90	247	140	2 x M16	9507
SCAL-150160-800	150-160	800	395	405	800	90	247	140	2 x M16	11629
SCAL-160170-400	160-170	400	414	426	400	90	257	140	2 x M16	7594
SCAL-160170-600	160-170	600	414	426	600	90	257	140	2 x M16	9796
SCAL-160170-800	160-170	800	414	426	800	90	257	140	2 x M16	11976
SCAL-170180-400	170-180	400	432	446	400	90	267	160	2 x M16	7830
SCAL-170180-600	170-180	600	432	446	600	90	267	160	2 x M16	10089
SCAL-170180-800	170-180	800	432	446	800	90	267	160	2 x M16	12323
SCAL-180190-400	180-190	400	451	466	400	90	277	160	2 x M16	8064
SCAL-180190-600	180-190	600	451	466	600	90	277	160	2 x M16	10381
SCAL-180190-800	180-190	800	451	466	800	90	277	160	2 x M16	12669
SCAL-190200-400	190-200	400	470	487	400	90	287	160	2 x M16	8298
SCAL-190200-600	190-200	600	470	487	600	90	287	160	2 x M16	10673
SCAL-190200-800	190-200	800	470	487	800	90	287	160	2 x M16	13021

