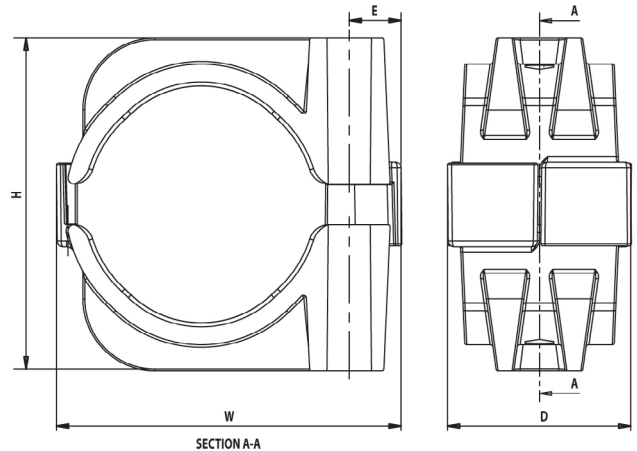
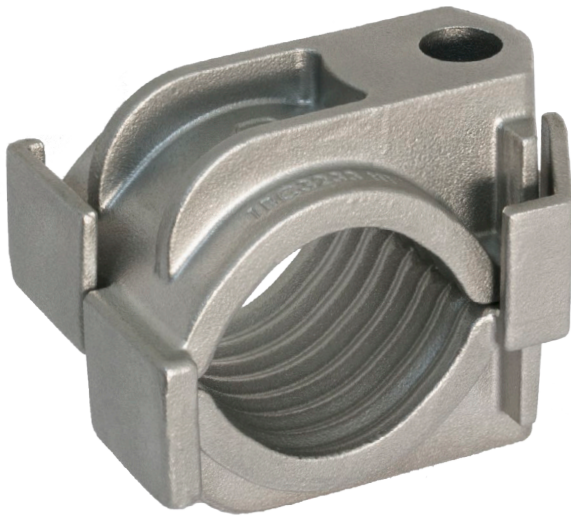


# Solace (1BCHT)



The CMP Products Solace Heavy Duty, One Bolt, High Temperature Fire Rated Stainless Steel single cable cleat is a cast metallic cleat which has been designed, constructed, and tested in accordance with the International Standard 'cable cleats for Electrical Installations' (IEC 61914:2015).

These Fire Rated cable cleats can be used with fire performance cables to ensure the safe retention and securing of single cables in the event of a wiring system being affected by fire. These fire resisting supports help to maintain the electrical systems integrity for any critical circuits during an emergency situation to enable safe evacuation. The cable cleat is manufactured from High Temperature Stainless Steel making it suitable for both indoor and outdoor applications. Due to its unique twin arc internal patent pending design profile it exhibits excellent retention, limiting both the axial and lateral movement.

The Solace One Bolt High Temperature Stainless Steel cable cleat is available in twelve sizes suitable for cable diameters of 10mm up to 71mm. The cable cleat has an M10 clearance hole for securing it to a mounting surface.

Technical Data & Classification	
Type	6.1.1 Metallic 1BCHT - One Bolt High Temperature Stainless Steel Cable Cleat
Design Specification	IEC 61914:2015
Temperature for permanent application	-60°C to +150°C IEC 61914:2015 clause / part 6.2
Temperature for 2 hour excursion	950°C BS8434 (Fire, shock & water)
Needle Flame Test	Pass IEC 61914:2015 clause 10.0, 10.1, IEC 60695-11-5
Lateral Load Test	15kN - 23kN, IEC 61914:2015 clause 9.3
Axial Load Test	1kN IEC 61914:2015 clause 9.4
Impact Resistance	Pass - Very Heavy IEC 61914:2015 clause 6.3, 6.3.5, 9.2
Material	Cast High Temperature Stainless Steel
Material Colour	Silver / grey

## Cable cleat selection table

### Features

- Cast High Temperature Stainless Steel
- Operating temperature -60°C to +150°C
- 2 hour withstand excursion to 950°C
- Fire tested to BS5839 / BS8491 / BSEN50200 / BS8434
- 10 - 71mm cable range take in 12 sizes
- Single bolt fixing design
- Can be double stacked
- Excellent axial & lateral load retention
- Corrosion resistant

Solace Part No.	Cable Ø range take (mm)	Dimensions (mm)					Weight (g)
		W	H	D	E	Fixing Hole Ø	
1BC1013HT	10-13	41	34	46	13	1 x M10	164
1BC1316HT	13-16	44	37	46	13	1 x M10	185
1BC1619HT	16-19	47	40	46	13	1 x M10	215
1BC1923HT	19-23	51	44	46	13	1 x M10	237
1BC2327HT	23-27	55	48	46	13	1 x M10	277
1BC2732HT	27-32	61	56	46	13	1 x M10	341
1BC3238HT	32-38	67	62	46	13	1 x M10	387
1BC3845HT	38-45	75	73	46	13	1 x M10	486
1BC4551HT	45-51	81	76	46	13	1 x M10	541
1BC5158HT	51-58	86	83	46	13	1 x M10	617
1BC5865HT	58-65	94	90	46	13	1 x M10	697
1BC6571HT	65-71	101	97	46	13	1 x M10	763