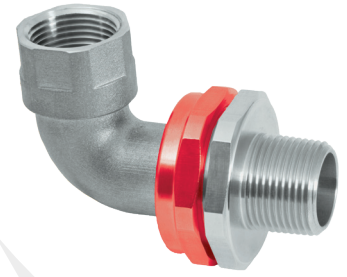


# PX789REX RAPID Ex

**PX789REX 90° UNION, GLOBALLY APPROVED, EXPLOSIVE ATMOSPHERE BARRIER CABLE / CONDUIT ACCESSORY**

- RapidEx liquid pour sealing system reduces installation time
- Allows the connection of conduit or glands to equipment
- Suitable for rigid or flexible conduit
- Integral coupling eliminates the need to rotate the conduit
- General purpose / industrial version available
- Equipment interface o-ring seal available
- -60°C to +85°C
- Globally marked, UKEX, IECEx, ATEX and cCSAus



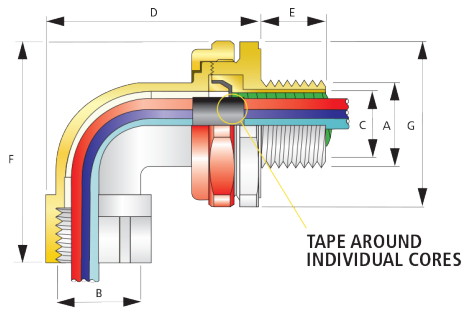
**IP66**  
+85°C  
↑  
-60°C

**Ex db Ex eb Ex ta**

## TECHNICAL CLASSIFICATION

DESIGN SPECIFICATION	BS 6121:Part 1:1989
ENCLOSURE PROTECTION	IK10 to IEC 62262 (20 joules) Brass and Stainless Steel only
INGRESS PROTECTION RATING**	IP66
AVAILABLE MATERIALS	Brass (standard), Electroless Nickel Plated Brass, Aluminium, Stainless Steel

\*\* When CMP installation accessories are used. Refer to [www.cmp-products.com](http://www.cmp-products.com) for further information.



## GLOBAL PRODUCT CERTIFICATION

ATEX CERTIFICATE	CML18ATEX1329U	IECEx CERTIFICATE	IECEx CML 18.0186U
UKEX CERTIFICATE	CML 21UKEX1242U	CODE OF PROTECTION	Ex db IIC Gb, Ex eb IIC Gb, Ex ta IIIC Da, Ex eb I Mb*, Ex eb I Mb*
CODE OF PROTECTION	⊕ II 2G 1D, Ex db IIC Gb, Ex eb IIC Gb, Ex ta IIIC Da, Ex eb I Mb*, Ex eb I Mb*	COMPLIANCE STANDARDS	IEC 60079-0,1,7,31
COMPLIANCE STANDARDS	EN 60079-0,1,7,31	COMPLIANCE STANDARDS	IEC 60079-0,1,7,31
cCSAus CERTIFICATE	1055233	CODE OF PROTECTION	Class I, Div 1 and 2, Groups A, B, C, D; IP66, 67, 68, Enclosure type 4X: Class I, Zone 1, AEx de II; Ex de II
CODE OF PROTECTION	Class I, Div 1 and 2, Groups A, B, C, D; IP66, 67, 68, Enclosure type 4X: Class I, Zone 1, AEx de II; Ex de II	COMPLIANCE STANDARDS	CSA C22.2 No.30.94; CAN/CSA 60079-0,1,7; CAN/CSA E61241-1-1; UL 50, 1203; UL 60079-0,1,7
COMPLIANCE STANDARDS	CSA C22.2 No.30.94; CAN/CSA 60079-0,1,7; CAN/CSA E61241-1-1; UL 50, 1203; UL 60079-0,1,7	EAC CERTIFICATE	EA3C RU C-GB, AĐ07.B.04602/22
EAC CERTIFICATE	EA3C RU C-GB, AĐ07.B.04602/22	INMETRO APPROVAL	TUV 12.1334U
CCC CERTIFICATE	2020322313003177	RETIE APPROVAL	EL-CS-220061
UKrSEPRO CERTIFICATE	CL 19.0370U	CCOE / PESO (INDIA) CERTIFICATE	P548696, P533772
SANS	IA MS-XPL21804 21.0013U	ECAS CERTIFICATE	24-03-106290/E24-03-110155/NB007
MARINE APPROVALS	LRS: LR22320794TA, DNV: TAE000000Y, ABS: 22-2230864-PDA, BV: 43180		

\*Aluminium alloys are not permitted in Group I mining applications.

Male-to-Male thread option available.

Available with an equipment interface 'O' ring seal. For such options please add the suffix letter "R" after the type number in the ordering reference above, e.g. PX789REXDM2M2.

For epoxy compound version please remove "REX" from ordering reference.

If 2 separate enclosures are required to be connected together please contact CMP Products.

PATENT GRANTED: ES2287986, NO 2287986, TR 2287986, AU 2010284848, AU 2014274614, GB 2485114, SG 178839, US 8872027, US 9484133, US 9774178, MY 153843, US 10193321, US 1034078

## PRODUCT SELECTION TABLE

ORDERING REFERENCE (BRASS, METRIC)	METRIC			ORDERING REFERENCE (BRASS, NPT)	NPT			DIAMETER OVER CORES 'C'	NUMBER OF CORES	MAX PROTRUSION LENGTH 'D'	MAX OVERHANG LENGTH 'E'	ACROSS FLATS HEX 'G'	ACROSS CORNERS Ø 'G'
	MALE FORWARD THREAD SIZE 'A'	MINIMUM THREAD LENGTH 'E'	FEMALE REAR THREAD SIZE 'B'		MALE FORWARD NPT THREAD SIZE 'A'	MINIMUM NPT THREAD LENGTH 'E' (IN)	FEMALE REAR THREAD SIZE 'B'						
PX789REXDM2M2	M20 X 1.5	15.0	M20 X 1.5	PX789REXDT1T1	½"	0.78	½"	12.6	21	62.9	63.8	46.0	50.6
PX789REXDM3M3	M25 X 1.5	15.0	M25 X 1.5	PX789REXDT2T2	¾"	0.80	¾"	17.5	30	70.6	69.5	50.0	55.0
PX789REXDM4M4	M32 X 1.5	15.0	M32 X 1.5	PX789REXDT3T3	1"	0.98	1"	23.6	50	75.7	78.0	60.0	66.0
PX789REXDM5M5	M40 X 1.5	15.0	M40 X 1.5	PX789REXDT4T4	1¼"	1.01	1¼"	30.0	59	83.7	84.8	65.0	71.5
PX789REXDM6M6	M50 X 1.5	15.0	M50 X 1.5	PX789REXDT5T5	1½"	1.03	1½"	41.0	115	95.9	96.3	75.0	82.5
PX789REXDM7M7	M63 X 1.5	15.0	M63 X 1.5	PX789REXDT6T6	2"	1.06	2"	53.7	115	108.8	115.1	90.0	99.0

All dimensions shown are in millimetres unless otherwise stated

For material options please add the following suffix to the ordering reference; Brass (no suffix required), Nickel Plated Brass "5", 316 Grade Stainless Steel "4", Copper Free Aluminium "1"