

HVSS-CC

High voltage stainless steel closed centres

CMP HVSS-CC trefoil cable cleat is an extension to the range of HVSS products, for the safe retention of high voltage cables. The range has been designed, constructed and tested (as HVSS-EC) in accordance with the International Standard IEC 61914: Cable cleats for electrical installations; to ensure the securing and retention of cables without sustaining damage to the cable(s). The product variations comprise of a fixed and slide cleat.

The HVSS-CC trefoil range of cable cleats are designed for use with high voltage cable installations and are manufactured to suit a range of cable diameters.

The range consists of three cable cleats designed to be installed as a system; a fixed cleat, a slide cleat and an intermediate restraint or float cleat (if required).

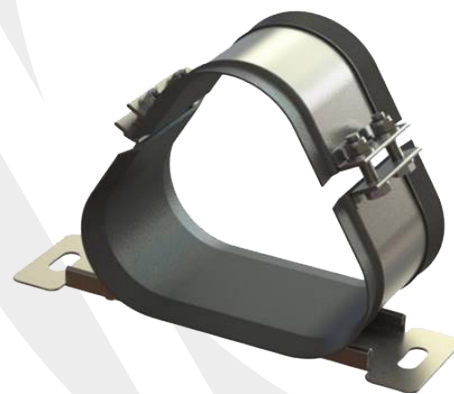
The HVSS-CC fixed cleat is designed to secure the cables in a trefoil formation to a mounting surface, providing excellent axial and lateral retention. In between these fixed cleats, slide cleats are installed to allow for the expansion and contraction of the cables in their normal operating conditions. Slide cleats are designed with a fixed bracket rail on the underside of the cable cleat base; this enables the cleat to move along the rail ensuring a trefoil formation, cable integrity and allowing HV cables to move within their cable 'snaked' formation as a trefoil configuration, keeping the three phase system as balanced as possible. Intermediate restraints or float cleats may be installed between the fixed and slide cleats to further improve the integrity of the system.

Both the slide and fixed variants can be installed as 'stand alone' products offering flexibility to the installer, alongside intermediate restraints or float cleats where required.

HVSS-CC cleats are fabricated in non-magnetic 316L stainless steel.

Flame retardant low smoke and fume fixed liners are fitted as standard, helping to:

- Restrain the cables within vertical applications.
- Provide a layer of protection to both the cable sheath and the cable cleat, during normal operation where thermal elongation of cable occurs.
- Protect the cable from chafing on any mounting surface due to differential movements, such as those found in marine and offshore applications.
- Assist in the extra protection of cables in the event of short circuit fault conditions.

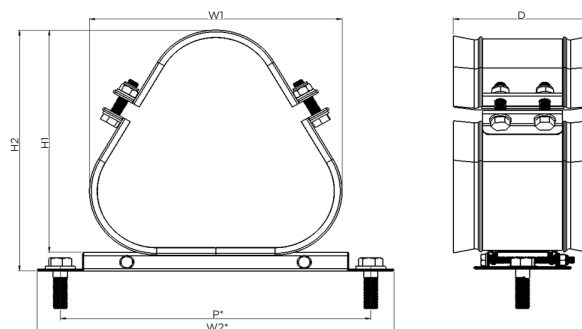


TECHNICAL DATA & CLASSIFICATION

TYPE	6.1.3 Composite
DESIGN SPECIFICATION	IEC 61914
TEMPERATURE FOR PERMANENT APPLICATION	-50°C to + 60°C IEC 61914 clause / part 6.2
NEEDLE FLAME TEST	Pass - 120 seconds IEC 61914 clause 10.0, 10.1, IEC 60695-11-5
IMPACT RESISTANCE	Pass - Very Heavy IEC 61914 clause 6.3, 6.3.5, 9.2
MATERIAL	316L Stainless Steel
MATERIAL THICKNESS	2mm
LINER MATERIAL	FR LSF / LSOH Polymer
CABLE FORMATION	Trefoil

FEATURES

- Third party certification to IEC 61914:2015
- Available in 316L stainless steel
- Sunlight (UV) resistant
- Operating temperature -50°C to +60°C
- Available in slide or fixed design
- Excellent axial and lateral load retention

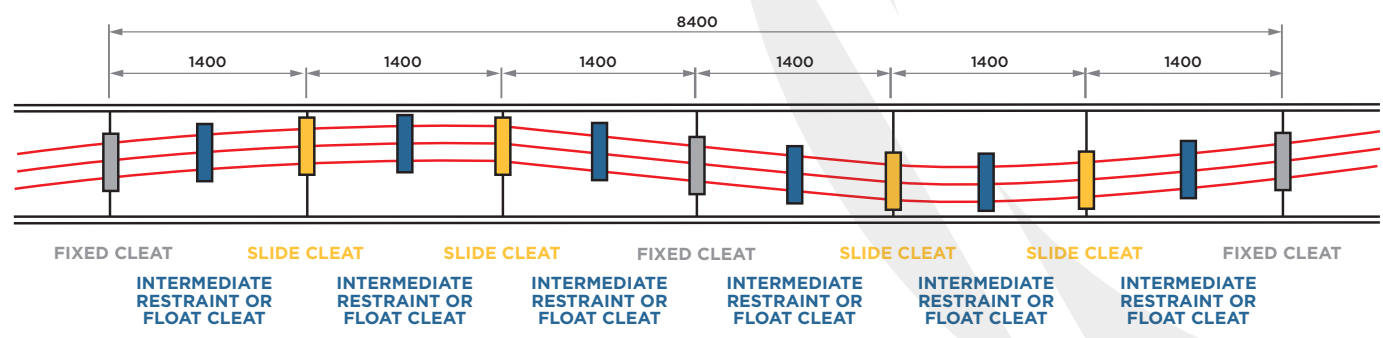


CABLE CLEAT SELECTION TABLE

HVSS-CC PART NO.	TYPE	CABLE Ø RANGE TAKE (mm)	DIMENSIONS mm							WEIGHT (g)
			W1	W2*	H1	H2	D	P*	FIXING HOLE Ø	
HVSS-CC-098102-FX	Fixed	98-102	222	350	206	230	172	300	2 x M16	3300
HVSS-CC-098102-SL	Slide	98-102	222	350	206	230	172	300	2 x M16	4100
HVSS-CC-098102-FL	Float	98-102	222	-	206	-	172	-	2 x M16	2500
HVSS-CC-114122-FX	Fixed	114-122	263	350	243	267	172	300	2 x M16	5021
HVSS-CC-114122-SL	Slide	114-122	263	350	243	267	172	300	2 x M16	5740
HVSS-CC-114122-FL	Float	114-122	263	-	243	-	172	-	2 x M16	4121
HVSS-CC-122128-SL	Slide	122-128	275	402	254	277	156	350	2 x M16	6034
HVSS-CC-122128-FX	Fixed	122-128	275	402	254	277	156	350	2 x M16	5315
HVSS-CC-127133-SL	Slide	127-133	285	402	264	286	156	350	2 x M16	6177
HVSS-CC-127133-FX	Fixed	127-133	285	402	264	286	156	350	2 x M16	5458
HVSS-CC-133142-SL	Slide	133-142	280	402	259	281	156	350	2 x M16	6076
HVSS-CC-133142-FX	Fixed	133-142	280	402	254	277	156	350	2 x M16	5387
HVSS-CC-142149-SL	Slide	142-149	317	402	293	316	156	350	2 x M16	6629
HVSS-CC-142149-FX	Fixed	142-149	317	402	293	316	156	350	2 x M16	5910
HVSS-CC-149156-SL	Slide	149-156	331	402	307	329	156	350	2 x M16	6831
HVSS-CC-149156-FX	Fixed	149-156	331	402	307	329	156	350	2 x M16	6112

* These dimensions can be adapted to suit specific applications

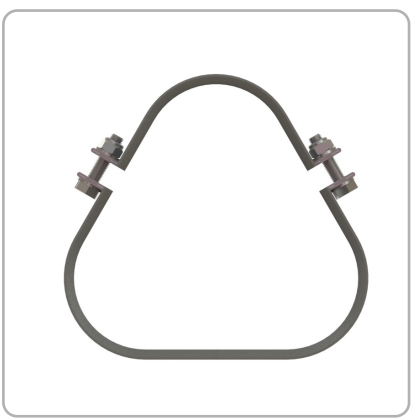
CABLE SNAKE INSTALLATION



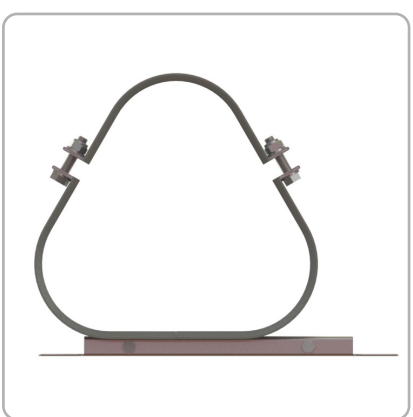
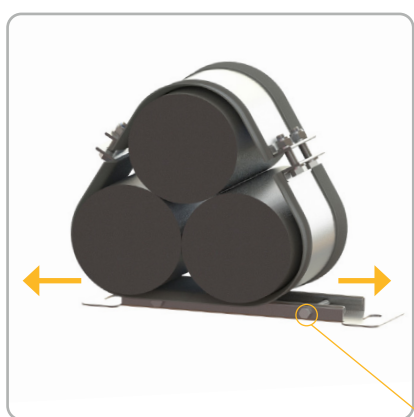
All dimensions in millimeters



Fixed type cable cleat



Float type cable cleat



Slide type cable cleat

The Slide Cleat base channel includes a stop position, to limit the slide distance in each direction.