

FORTIS (SSCSS)

The FORTIS cable support cleat has been designed, constructed and tested in accordance with the international standard IEC 61914 cable cleats for electrical installations; to ensure the securing and retention of cables, without sustaining damage to the cable(s).

Designed to support cables in high voltage applications, the FORTIS allows cable sag between fixed anchor points, where desirable. Sagging cable between fixed anchor points is a method of installation where the cable is allowed to hang between the cleats. This area of excess cable will accommodate thermal expansion and contraction of the cable in service, without putting undue stress on the anchor points.

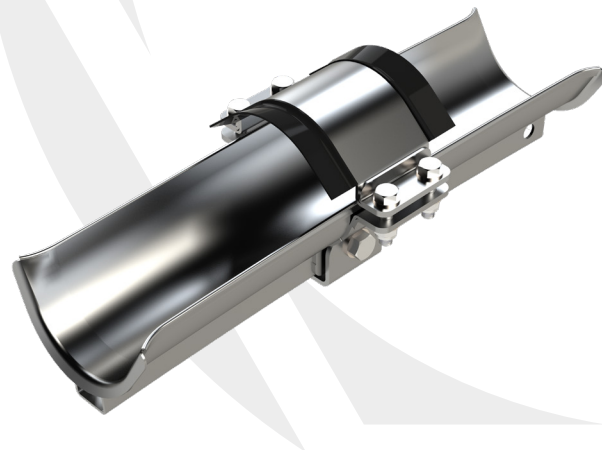
The FORTIS adds additional support to the cable at the anchor points, ensuring there is no excessive pressure or point loading to the cable in these critical areas. The system is designed so that the support arm and cleat area can swivel and rotate, allowing flexibility to the installer.

The FORTIS comes in three lengths; 400mm, 600mm and 800mm. This will accommodate larger cable cleat fixing centers, whilst reducing the pressure applied to the cable from its own weight.

The product can be fabricated to suit any installation parameters. Please contact CMP to discuss your specific project requirements.

FEATURES

- Third party tested in accordance with IEC 61914
- Highly corrosion resistant stainless steel
- Sunlight (UV) resistant
- Operating temperature -60°C to +90°C
- Allows cable sag between fixed anchor points
- Increased support reducing pressure on cable
- Strong heavy duty construction



TECHNICAL DATA & CLASSIFICATION

TYPE	IEC 61914 6.1.3 Composite
DESIGN SPECIFICATION	IEC 61914
TEMPERATURE FOR PERMANENT APPLICATION	-60°C to +90°C IEC 61914 clause 6.2
NEEDLE FLAME TEST	Pass - 120 seconds IEC 61914 clause 10.0, 10.1, IEC 60695-11-5
IMPACT RESISTANCE	Pass - Very Heavy IEC 61914 clause 6.3, 6.3.5, 9.2
MATERIAL	316L Stainless Steel
LINER MATERIAL	FR LSF / LSOH Polymer
CABLE FORMATION	Single/Parallel

SHORT CIRCUIT TESTING TO IEC 61914 - CLAUSE 9.5

PARALLEL FORMATION	
One Short Circuit 8.4m, with intermediate restraints	Two Short Circuit 8.4m, with intermediate restraints
800mm conductor centres	800mm conductor centres
1 sec	1 sec
168kA Peak	154kA Peak
66 kA r.m.s	60 kA r.m.s

FORTIS (SSCSS)

CABLE CLEAT SELECTION TABLE

FORTIS PART NO.	CABLE Ø RANGE TAKE (mm)	LENGTH (MM)	DIMENSIONS mm						WEIGHT (g)
			H	W	L	L2	W2	BASE FIXING Ø	
SSCSS-100110-400	100-110	400	178	192	400	70	62	1 x M16	4393
SSCSS-100110-600	100-110	600	178	192	600	70	62	1 x M16	5321
SSCSS-100110-800	100-110	800	178	192	800	70	62	1 x M16	6248
SSCSS-110120-400	110-120	400	188	202	400	70	62	1 x M16	4574
SSCSS-110120-600	110-120	600	188	202	600	70	62	1 x M16	5547
SSCSS-110120-800	110-120	800	188	202	800	70	62	1 x M16	6517
SSCSS-120130-400	120-130	400	198	212	400	70	62	1 x M16	4751
SSCSS-120130-600	120-130	600	198	212	600	70	62	1 x M16	5894
SSCSS-120130-800	120-130	800	198	212	800	70	62	1 x M16	6801
SSCSS-130140-400	130-140	400	208	222	400	70	62	1 x M16	4931
SSCSS-130140-600	130-140	600	208	222	600	70	62	1 x M16	6007
SSCSS-130140-800	130-140	800	208	222	800	70	62	1 x M16	7070
SSCSS-140150-400	140-150	400	218	232	400	70	62	1 x M16	5111
SSCSS-140150-600	140-150	600	218	232	600	70	62	1 x M16	6239
SSCSS-140150-800	140-150	800	218	232	800	70	62	1 x M16	7358
SSCSS-150160-400	150-160	400	228	242	400	70	62	1 x M16	5291
SSCSS-150160-600	150-160	600	228	242	600	70	62	1 x M16	6462
SSCSS-150160-800	150-160	800	228	242	800	70	62	1 x M16	7665
SSCSS-160170-400	160-170	400	238	252	400	70	62	1 x M16	5471
SSCSS-160170-600	160-170	600	238	252	600	70	62	1 x M16	6696
SSCSS-160170-800	160-170	800	238	252	800	70	62	1 x M16	7955
SSCSS-170180-400	170-180	400	248	262	400	70	62	1 x M16	5649
SSCSS-170180-600	170-180	600	248	262	600	70	62	1 x M16	6916
SSCSS-170180-800	170-180	800	248	262	800	70	62	1 x M16	8238
SSCSS-180190-400	180-190	400	258	272	400	70	62	1 x M16	5832
SSCSS-180190-600	180-190	600	258	272	600	70	62	1 x M16	7189
SSCSS-180190-800	180-190	800	258	272	800	70	62	1 x M16	8532
SSCSS-190200-400	190-200	400	268	282	400	70	62	1 x M16	6014
SSCSS-190200-600	190-200	600	268	282	600	70	62	1 x M16	7417
SSCSS-190200-800	190-200	800	268	282	800	70	62	1 x M16	8805

