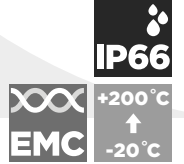
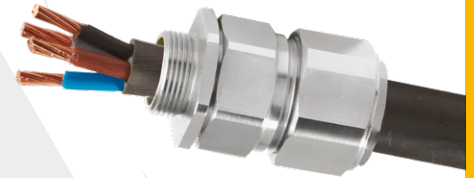


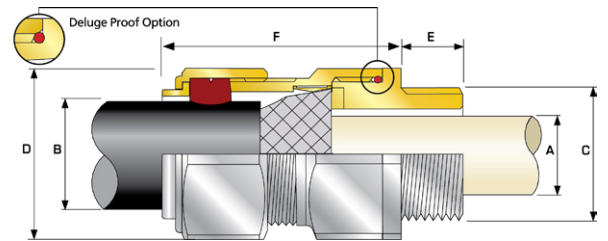
CXHT HIGH TEMPERATURE, SINGLE SEAL INDUSTRIAL CABLE GLAND

FOR BRAIDED & STEEL TAPE ARMoured CABLES

- -20°C to 200°C high temperature ThermIn seals
- High quality durable materials
- Robust, heavy duty design
- Metal-to-metal armour clamping
- Direct & remote installation
- Permanently crimped, low impedance earth termination
- Secure against self-loosening
- Controlled outer 'load retention' seal
- Unique OSTG prevents overtightening
- Deluge protection option
- Superior EMC performance



TECHNICAL CLASSIFICATION	
DESIGN SPECIFICATION	BS 6121:Part 1:1989, IEC 62444, EN 62444
MECHANICAL CLASSIFICATION*	Impact = Level 8, Cable Anchorage = Class D
ENCLOSURE PROTECTION	IK10 to IEC 62262 (20 joules) Brass & Stainless Steel only
ELECTRICAL CLASSIFICATIONS*	Category B (Category A when used with braid, tape or pliable wire armour cables)
INGRESS PROTECTION RATING**	IP66
CABLE TYPE	Wire Braid Armour, Screened Flexible (EMC) Wire Braid (e.g. CY / SY), Pliable Wire Armour (PWA), Steel Tape Armour (STA)
SEAL MATERIAL	CMP Thermoset Rubber
SEALING TECHNIQUE	Unique CMP 'LRS' Outer Seal (Load Retention Seal)
SEALING AREA(S)	Cable Outer Sheath
CABLE GLAND MATERIAL	Brass, Electroless Nickel Plated Brass, Stainless Steel, Aluminium
ARMOUR CLAMPING	Detachable Armour Cone & AnyWay Universal Clamping Ring
CABLE GLAND KITS AVAILABLE	Cable Gland kit for use with all types of SWA cable including 2 Brass Cable Glands, 2 Steel Locknuts, 2 Brass Earth Tags and 2 PVC Shrouds for sizes up to and including 32mm. For sizes 40mm and above each kit includes 1 of each component.
CONTINUOUS OPERATING TEMPERATURE	-20 °C to +200 °C



* Mechanical & Electrical Classifications applied as per IEC 62444 & EN 62444 ** When CMP installation accessories are used. Refer to www.cmp-products.com for further information. Deluge Proof option available (CWDHT)

† Grooved Cone (X) is predominantly used for Wire Braid (e.g. GSWB, TCWB), Steel Tape Armour (STA, DSTA) and Aluminium Strip Armour (ASA) but is also suitable for Single Wire Armour (SWA), Aluminium Wire Armour (AWA) and Pliable Wire Armour (PWA) if the range is outside that of the Stepped Cone (W). Grooved Cone (X) dimensions shown in the Cable Gland Selection Table below are for a double wire strand of braid armour cables. Tapes can also be doubled over. For cables that have only a single layer of armour such as SWA the clamping range should be used as shown in the table below.

COMBINED ORDERING REFERENCE ("BRASS METRIC")			ENTRY THREAD "C"	THREAD LENGTH (METRIC) "E"	CABLE BEDDING DIAMETER "A"		OVERALL CABLE DIAMETER "B"			ARMOUR RANGE † GROOVED CONE (X)		ACROSS FLATS "D"	ACROSS CORNERS "D"	PROTRUSION LENGTH "F"	SHROUD	CABLE GLAND WEIGHT (kgs)
SIZE	TYPE	ORDERING SUFFIX			MAX	MIN	MAX	MIN	MAX	MAX	MAX	MAX	MAX			
20S16	CXHT	1RA	M20	10.0	8.7	6.1	13.1	0.3	1.0	24.0	26.4	48.0	PVC04	0.100		
20S	CXHT	1RA	M20	10.0	11.7	9.5	15.9	0.3	1.0	24.0	26.4	48.0	PVC04	0.100		
20	CXHT	1RA	M20	10.0	14.0	12.5	20.9	0.4	1.0	30.5	33.6	48.0	PVC06	0.147		
25S	CXHT	1RA	M25	10.0	20.0	14.0	22.0	0.4	1.2	37.5	41.3	56.0	PVC09	0.224		
25	CXHT	1RA	M25	10.0	20.0	18.2	26.2	0.4	1.2	37.5	41.3	56.0	PVC09	0.221		
32	CXHT	1RA	M32	10.0	26.0	23.7	33.9	0.4	1.2	46.0	50.6	54.0	PVC11	0.308		
40	CXHT	1RA	M40	15.0	32.2	27.9	40.4	0.4	1.6	55.0	60.5	58.0	PVC15	0.448		
50S	CXHT	1RA	M50	15.0	38.2	35.2	46.7	0.4	1.6	60.0	66.0	61.0	PVC18	0.567		
50	CXHT	1RA	M50	15.0	44.1	40.4	53.0	0.6	1.6	70.1	77.1	60.0	PVC21	0.751		
63S	CXHT	1RA	M63	15.0	50.0	45.6	59.4	0.6	1.6	75.0	82.5	74.0	PVC23	1.036		
63	CXHT	1RA	M63	15.0	56.0	54.6	65.8	0.6	1.6	80.0	88.0	71.0	PVC25	1.016		
75S	CXHT	1RA	M75	15.0	62.0	59.0	72.0	0.6	1.6	90.0	99.0	86.0	PVC28	1.787		
75	CXHT	1RA	M75	15.0	64.2	66.7	78.4	0.6	1.6	100.0	110.0	82.0	PVC30	2.091		
90	CXHT	1RA	M90	24.0	78.6	76.2	90.3	0.8	1.6	114.3	125.7	95.0	PVC32	3.044		
100	CXHT	1RA	M100	24.0	91.0	86.1	101.4	0.8	1.6	123.0	135.3	95.0	LSF33	3.132		
115	CXHT	1RA	M115	24.0	98.0	101.5	110.2	0.8	1.6	133.4	146.7	107.5	LSF34	4.476		
130	CXHT	1RA	M130	24.0	115.0	110.2	123.2	0.8	1.6	152.4	167.6	110.0	LSF35	5.761		

*For material options add the following suffix to the Ordering Reference; Brass (no suffix required); Nickel Plated Brass '5'; 316 Grade Stainless Steel '4'; Copper Free Aluminium '1'

Examples: 20CXHT1RA5 = Nickel Plated Brass M20

Dimensions are displayed in millimetres unless otherwise stated