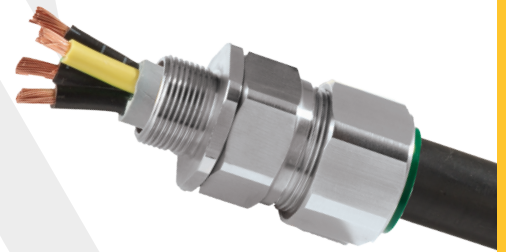


CWe INTERNATIONALLY APPROVED, Ex eb, EXPLOSIVE ATMOSPHERE CABLE GLAND

FOR ALL TYPES OF STEEL & ALUMINIUM WIRE ARMoured CABLES

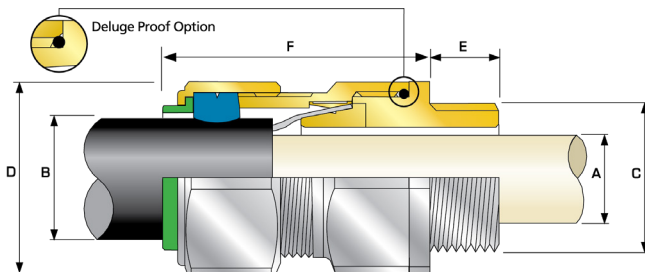
- Metal-to-metal armour clamping
- Direct and remote installation
- Permanently crimped, low impedance earth termination
- Secure against self-loosening
- Controlled outer load retention seal
- Unique OSTG prevents overtightening
- -60°C to +130°C
- Internationally marked, UKEX, IECEx and ATEX
- Superior EMC performance



IP66	IP67	IP68
EMC	+130 °C ↑ -60 °C	
Ex eb	Ex ta	

TECHNICAL CLASSIFICATION	
DESIGN SPECIFICATION	BS 6121:Part 1:1989, IEC 62444, EN 62444
MECHANICAL CLASSIFICATION*	Impact = Level 8, Cable Anchorage = Type D
ENCLOSURE PROTECTION	IK10 to IEC 62262 (20 joules) Brass and Stainless Steel only
ELECTRICAL CLASSIFICATIONS*	Category B
INGRESS PROTECTION RATING**	IP66 as standard (IP67, IP68*** available upon request)
CABLE GLAND MATERIAL	Brass, Electroless Nickel Plated Brass, Aluminium, Stainless Steel
SEAL MATERIAL	CMP SOLO LSF Halogen Free Thermoset Elastomer
CABLE TYPE	Single Wire Armour (SWA), Aluminium Wire Armour (AWA),
SEALING TECHNIQUE	Outer Load Retention Seal
SEALING AREA(S)	Outer Cable Sheath
ARMOUR CLAMPING	Detachable Armour Cone and AnyWay Universal Clamping Ring

* Mechanical and Electrical Classifications applied as per IEC 62444 and EN 62444 ** When CMP installation accessories are used. Refer to www.cmp-products.com for further information. *** IP68 tested to a minimum depth of 30 metres for 12 hours, alternative depths / durations can be provided upon request
Deluge Proof version available, ferrule colour coded white for ease of identification, please add 'D' after the product type.



GLOBAL PRODUCT CERTIFICATION			
ATEX CERTIFICATE	CML18ATEX1323X	IECEx CERTIFICATE	IECEx CML 18.0180X
UKEX CERTIFICATE	CML 21UKEX1251X		
CODE OF PROTECTION	⊕ II 2G TD, Ex eb IIC Gb, Ex ta IIIC Da	CODE OF PROTECTION	Ex eb IIC Gb, Ex ta IIIC Da
COMPLIANCE STANDARDS	EN 60079-0,7,31	COMPLIANCE STANDARDS	IEC 60079-0,7,31
EAC CERTIFICATE	RU C-GB.A.07.B.0459422	UKrSEPRO CERTIFICATE	CLL 19.0371X
ECAS CERTIFICATE	24-03-106290/E24-03-110155/NB007		
CCC CERTIFICATE	2020322313003285	INMETRO APPROVAL	TUV 12.0617X
RETIE APPROVAL NUMBER	EL-CS-220061	SANS	IA S-XPL21804 21.0009X
MARINE APPROVALS	LRS: LR22320739TA, DNV: TAE00000Y ABS: 21-2090433-PDA, BV: 43180		



COMBINED ORDERING REFERENCE ('BRASS METRIC)			METRIC	THREAD LENGTH (METRIC) 'E'	CABLE BEDDING DIAMETER 'A'		OVERALL CABLE DIAMETER 'B'			ARMOUR RANGE		ACROSS FLATS 'D'	ACROSS CORNERS 'D'	PROTRUSION LENGTH 'F'	SHROUD	CABLE GLAND WEIGHT (kg)
SIZE	TYPE	ORDERING SUFFIX			MAX	MIN	MAX	MIN	MAX	MIN	MAX	MAX	MAX			
20S16	CWE	1RA	M20	15.0	8.7	6.1	13.1	0.8	1.25	24.0	26.4	48.0	PVC04	0.10		
20S	CWE	1RA	M20	15.0	11.7	9.5	15.9	0.8	1.25	24.0	26.4	48.0	PVC04	0.10		
20	CWE	1RA	M20	15.0	14.0	12.5	20.9	0.8	1.25	30.5	33.6	48.0	PVC06	0.15		
25S	CWE	1RA	M25	15.0	20.0	14.0	22.0	1.25	1.6	37.5	41.3	56.0	PVC09	0.22		
25	CWE	1RA	M25	15.0	20.0	18.2	26.2	1.25	1.6	37.5	41.3	56.0	PVC09	0.22		
32	CWE	1RA	M32	15.0	26.0	23.7	33.9	1.6	2.0	46.0	50.6	54.0	PVC11	0.31		
40	CWE	1RA	M40	15.0	32.2	27.9	40.4	1.6	2.0	55.0	60.5	58.0	PVC15	0.45		
50S	CWE	1RA	M50	15.0	38.2	35.2	46.7	2.0	2.5	60.0	66.0	61.0	PVC18	0.57		
50	CWE	1RA	M50	15.0	44.1	40.4	53.0	2.0	2.5	70.1	77.1	60.0	PVC21	0.75		
63S	CWE	1RA	M63	15.0	50.0	45.6	59.4	2.0	2.5	75.0	82.5	74.0	PVC23	1.04		
63	CWE	1RA	M63	15.0	56.0	54.6	65.8	2.0	2.5	80.0	88.0	71.0	PVC25	1.02		
75S	CWE	1RA	M75	15.0	62.0	59.0	72.0	2.0	2.5	90.0	99.0	86.0	PVC28	1.79		
75	CWE	1RA	M75	15.0	64.2	66.7	78.4	2.5	3.0	100.0	110.0	82.0	PVC30	2.09		
90	CWE	1RA	M90	24.0	78.6	76.2	90.3	3.15	4.0	114.3	125.7	95.0	PVC32	3.04		
100	CWE	1RA	M100	24.0	91.0	86.1	101.4	3.15	4.0	123.0	135.3	95.0	LSF34	3.13		
115	CWE	1RA	M115	24.0	98.0	101.5	110.2	3.15	4.0	133.4	146.7	107.5	LSF34	4.48		
130	CWE	1RA	M130	24.0	115.0	110.2	123.2	3.15	4.0	152.4	167.6	110.0	LSF35	5.76		

*For material options add the following suffix to the ordering reference; Brass (no suffix required); Nickel Plated Brass 'S'; 316 Grade Stainless Steel '4'; Copper Free Aluminium '1'
For NPT options add the following digits to the material suffix; 1/2" = 31; 3/4" = 32; 1" = 33; 1 1/4" = 34; 1 1/2" = 35; 2" = 36; 2 1/2" = 37; 3" = 38; 3 1/2" = 39; 4" = 310 (Brass requires prefix '0')

Examples: 32CWE1RA534 = Nickel Plated Brass 1 1/4" NPT, 50SCWE1RA035 = Brass 1 1/2" NPT, 25CWE1RA432 = Stainless Steel 3/4" NPT, 20CWE1RA5 = Nickel Plated Brass M20

Dimensions are displayed in millimetres unless otherwise stated

Dimensions listed are for metric cable glands only. Dimensions for alternative threads may vary.