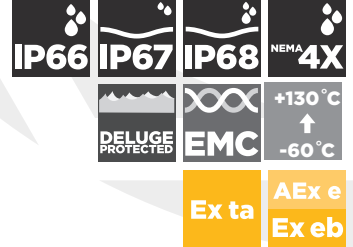
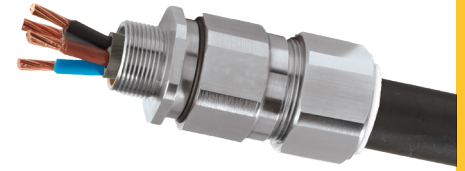


C2KX

C2KX GLOBALLY APPROVED, HAZARDOUS (CLASSIFIED) LOCATION CABLE GLAND

FOR ALL TYPES OF BRAIDED CABLES

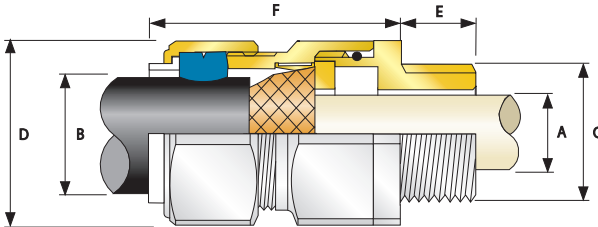
- Metal-to-metal armor clamping
- Direct and remote installation
- Integral protected deluge seal
- Controlled outer load retention seal
- Unique OSTG prevents overtightening
- Integral protected deluge seal
- Standard:
 - 60°C to +130°C (-76°F to +266°F)
- Globally marked, UL, cCSAus, IECEx, ATEX and UKEX
- Superior EMC performance
- VAR design available for VFD/ VSD cables
- As standard in nickel plated brass with NPT thread form



CMP SOLO LSF HALOGEN FREE SHROUDS ALSO AVAILABLE ON REQUEST

TECHNICAL CLASSIFICATION	
DESIGN SPECIFICATION	BS 6121:Part 1:1989, IEC 62444, EN 62444
MECHANICAL CLASSIFICATION*	Impact = Level 8, Cable Anchorage = Type C
ENCLOSURE PROTECTION	IK10 to IEC 62262 (20 joules) Brass and Stainless Steel only
ELECTRICAL CLASSIFICATION*	Category B (Category A when used with braid, tape or pliable wire armor cables)
INGRESS PROTECTION RATING**	IP66, IP67 and IP68***
NEMA RATING**	NEMA 4X
DELUGE PROTECTION COMPLIANCE	DTS01 : 91
CABLE TYPE	Braid Armored Shipboard cable and all IEC Braid Cables
ARMOR CLAMPING	Detachable Armor Cone and AnyWay Universal Clamping Ring
SEAL MATERIAL	CMP SOLO LSF Halogen Free Thermoset Elastomer
SEALING TECHNIQUE	CMP Load Retention Seal
SEALING AREA(S)	Cable Outer Jacket
CABLE GLAND MATERIAL	Electroless Nickel Plated Brass, Copper Free (<0.4%) Aluminum, Stainless Steel

* Mechanical and Electrical Classifications applied as per IEC 62444 and EN 62444 ** When CMP installation accessories are used. Refer to www.cmp-products.com for further information. *** IP68 tested to a minimum depth of 30 metres for 12 hours, alternative depths / durations can be provided upon request.



GLOBAL PRODUCT CERTIFICATION			
ATEX CERTIFICATE	CML18ATEX1323X	IECEx CERTIFICATE	IECEx CML 18.0180X
UKEX CERTIFICATE	CML21UKEX1251X		
CODE OF PROTECTION	II 2G 1D, Ex eb IIC Gb, Ex ta IIC Da	CODE OF PROTECTION	Ex eb IIC Gb, Ex ta IIC Da
COMPLIANCE STANDARDS	EN 60079-0,7,31	COMPLIANCE STANDARDS	IEC 60079-0,7,31
cCSAus CERTIFICATE (20S16 - 90)	2367109		
CSAus CODE OF PROTECTION	Class I, Zone 1, AEx e II Note: This product is suitable for Class I, Division 2 applications, when installed as per NEC 501.10(B)(4)		
cCSA CODE OF PROTECTION	Class I, Zone 1, Ex e II Note: This product is suitable for Class I, Division 2 applications, when installed as per Canadian Electrical Code J18-150 & J18-152		
COMPLIANCE STANDARDS	CAN/CSA-C22.2 No 0-10.18.3-04, 94.1-07, 94.2-07, CSA-E60079-0-11, CAN/CSA-E60079-7-03, ANSI/UL 514B, ANSI/UL 50, ANSI/UL 50E, ANSI/UL 2225, CAN/CSA C22.2 No. 60529-05, ANSI/UL 60079-0, 7, IEC 60529 Ed. 2.1		
UL CERTIFICATE (20S16 - 90)	E200163-19990430, E256367-20060104		
CODE OF PROTECTION	Class I, Zone 1, AEx e II		
COMPLIANCE STANDARDS	UL 50, UL 514B, UL 2225, EN 50014, EN 50018, EN 60529		
ECAS CERTIFICATE	24-03-106290_E24-03-110155_NB0007	UKrSEPRO CERTIFICATE	CL1 19.0371X
EAC CERTIFICATE	RU C-GB.AJ07.B.0459422		
CODE OF PROTECTION	IEx e IIC Gb X, 2Ex nR IIC Gc X, Ex ta IIC Da X		
RETE APPROVAL NUMBER	EL-CS-220061	COE / PESO (INDIA) CERTIFICATE	P533772
CCC CERTIFICATE	2020322313003285	INMETRO APPROVAL	TUV 12.0617X
SANS	IA S-XPL21804 21.0009X		
MARINE APPROVALS	LRS: LR22320739TA, DNV: TAE000000Y, ABS: 21-2090433-PDA, BV: 43180		



COMBINED ORDERING REFERENCE (*NICKEL PLATED BRASS NPT)			AVAILABLE ENTRY THREADS *C			MINIMUM THREAD LENGTH *E	CABLE BEDDING DIAMETER *A	OVERALL CABLE DIAMETER *B			ARMOUR RANGE GROOVED CONE (X)		ACROSS FLATS *D	ACROSS CORNERS *D	PROTRUSION LENGTH *F	SHROUD	CABLE GLAND WEIGHT (oz)
			NPT	NPT (OPTION)	METRIC (OPTION)			MAX	MIN	MAX	MIN	MAX					
SIZE	TYPE	ORDERING SUFFIX															
20S16	C2KX	1RA531	1/2"	3/4"	M20	0.78	0.34	0.24	0.52	0.01	0.04	0.94	1.04	2.56	PVC04	8.19	
20S	C2KX	1RA531	1/2"	3/4"	M20	0.78	0.46	0.37	0.63	0.01	0.04	0.94	1.04	2.44	PVC04	7.96	
20	C2KX	1RA531	1/2"	3/4"	M20	0.78	0.55	0.49	0.82	0.02	0.04	1.20	1.32	2.48	PVC06	7.86	
25S	C2KX	1RA532	3/4"	1"	M25	0.80	0.79	0.55	0.87	0.02	0.05	1.48	1.62	2.74	PVC09	12.24	
25	C2KX	1RA532	3/4"	1"	M25	0.80	0.79	0.72	1.03	0.02	0.05	1.48	1.62	2.74	PVC09	12.24	
32	C2KX	1RA533	1"	1 1/4"	M32	0.98	1.02	0.93	1.33	0.02	0.05	1.81	1.99	2.95	PVC11	19.47	
40	C2KX	1RA534	1 1/4"	1 1/2"	M40	1.01	1.27	1.10	1.59	0.02	0.06	2.17	2.38	2.95	PVC15	26.46	
50S	C2KX	1RA535	1 1/2"	2"	M50	1.03	1.50	1.39	1.84	0.02	0.06	2.36	2.60	3.03	PVC18	30.27	
50	C2KX	1RA536	2"	2 1/2"	M50	1.06	1.74	1.59	2.09	0.02	0.06	2.76	3.04	3.03	PVC21	40.00	
63S	C2KX	1RA536	2"	2 1/2"	M63	1.06	1.97	1.80	2.34	0.02	0.06	2.95	3.25	3.15	PVC23	46.77	
63	C2KX	1RA537	2 1/2"	3"	M63	1.57	2.21	2.15	2.59	0.02	0.06	3.15	3.46	3.15	PVC25	47.37	
75S	C2KX	1RA537	2 1/2"	3"	M75	1.57	2.44	2.32	2.83	0.02	0.06	3.54	3.90	3.43	PVC28	71.39	
75	C2KX	1RA538	3"	3 1/2"	M75	1.63	2.53	2.63	3.09	0.02	0.06	3.94	4.33	3.47	PVC30	87.41	
90	C2KX	1RA539	3 1/2"	4"	M90	1.69	3.09	3.00	3.56	0.03	0.06	4.50	4.95	4.02	PVC32	124.27	
100	C2KX	1RA539	3 1/2"	4"	M100	1.69	3.58	3.39	3.99	0.03	0.06	5.24	5.76	4.49	LSF33	101.13	

* Note : For material options please change the suffix in the ordering reference ; Brass (no suffix required), Nickel Plated Brass *5" (as standard), 316 Grade Stainless Steel *4", Copper Free Aluminum *1"
For NPT options please change the following digits after the material suffix ; 1/2" = 31, 3/4" = 32, 1" = 33, 1 1/4" = 34, 1 1/2" = 35, 2" = 36, 2 1/2" = 37, 3" = 38, 3 1/2" = 39, 4" = 310 (Brass requires prefix "0")

Examples: 32C2KX1RA5 = Nickel Plated Brass 32mm, 32C2KX1RA1 = Copper Free Aluminum 32mm

Dimensions are displayed in inches unless otherwise stated