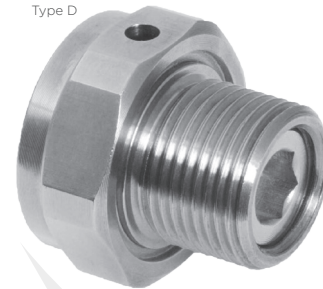
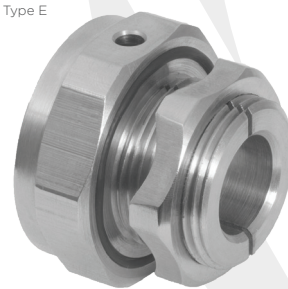


**781 BREATHER / DRAIN PLUG, GLOBALLY APPROVED, EXPLOSIVE ATMOSPHERE CABLE / CONDUIT ACCESSORY**

- 781E for Ex e use
- 781D for Ex d use
- Drains equipment susceptible to moisture collection
- Enables equipment to breathe
- General purpose / industrial version available
- Nylon Ex e only version available (-20°C to +60°C)
- -60°C to +130°C (metallic versions)
- Globally marked, UKEX, IECEx, ATEX and cCSAus
- The 781D can be used with enclosures up to 30 litres for group IIB gases and enclosures up to 2.5 litres for group IIC gases
- No enclosure volume restrictions apply to 781E

Type E

Type D


**IP66**
**+130 °C**  
**↑**  
**-60 °C**

Ex db

Ex eb

Ex ta

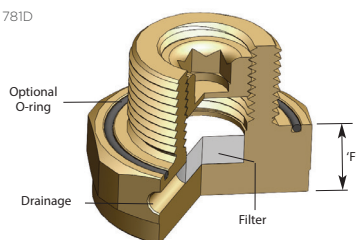
**TECHNICAL CLASSIFICATION**

DESIGN SPECIFICATION	BS 6121:Part 1:1989
ENCLOSURE PROTECTION	IK10 to IEC 62262 (20 joules) Brass and Stainless Steel Only
INGRESS PROTECTION RATING**	781D: IP66 (when fitted with CMP sealing accessories) 781E: IP66 (with o-ring interface seal and lock nut as standard)
AVAILABLE MATERIALS	Brass, Nickel Plated Brass, Aluminium, Stainless Steel, Nylon (781E only)
CONTINUOUS OPERATING TEMPERATURE	781D: -60°C to +130°C 781E: -60°C to +130°C (-20°C to +60°C Nylon)
ACCESSORIES INCLUDED (781E ONLY)	Integral Entry Thread equipment interface o-ring seal, Castellated Locknut

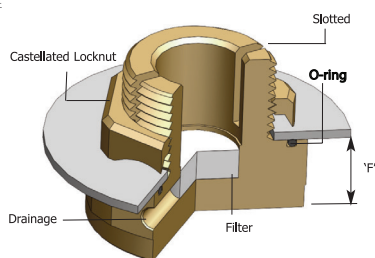
\*\* When CMP installation accessories are used (781E). Refer to [www.cmp-products.com](http://www.cmp-products.com) for further information.

The 781D can be used with enclosures up to 30 litres for group IIB gases and enclosures up to 2.5 litres for group IIC gases. No enclosure volume restrictions apply to 781E.

781D



781E


**GLOBAL PRODUCT CERTIFICATION**

ATEX CERTIFICATE	CML 18ATEX1330U	IECEx CERTIFICATE	IECEx CML 18.0187U
UKEX CERTIFICATE	CML 21UKEX1241U		
CODE OF PROTECTION	781D: Ex d IIC, Class I, Zone 1 AEx d IIC; Ex db IIC Gb, Ex ta IIC Da 781E: Ex e II, Class I, Zone 1, AEx e II, Enclosure Type 4X	CODE OF PROTECTION	781D: Ex db IIC Gb, Ex ta IIC Da 781E: Ex eb IIC Gb, Ex ta IIC Da
COMPLIANCE STANDARDS	EN 60079-0, 1, 7, 31	COMPLIANCE STANDARDS	IEC 60079-0, 1, 7, 31
cCSAus CERTIFICATE (2016-100)	1055233	UL CERTIFICATE	E253914-20160608
CODE OF PROTECTION	781D: Ex d IIC, Class I, Zone 1 AEx d IIC; Class I Div 1, Groups A, B, C, D, Enclosure Type 4X 781E: Ex e II, Class I, Zone 1, AEx e II, Enclosure Type 4X	CODE OF PROTECTION	781D: Class I, Zone 1, AEx d IIB or IIC; Zone 20, AEx ta IIC 781E: Class I, Zone 1, AEx e IIC
COMPLIANCE STANDARDS	CSA C22.2 30, 94; CSA C22.2 60079-0, 1, 7, E61241-1-1, UL50, 1203, UL60079-0, 1, 7	COMPLIANCE STANDARDS	UL 60079-0, 1, 7, 31
EAC CERTIFICATE	RU C-GB. A.07.B.02492/20		
COMPLIANCE STANDARDS	781D: Ex db IIC Gb U, Ex ta IIC Da U 781E: Ex e IIC Gb U, Ex ta IIC Da U		
RETIE APPROVAL NUMBER	EL-CS-220061	CODE / PESO (INDIA) CERTIFICATE	P548696, P533772
ECAS CERTIFICATE	24-03-106290/E24-03-110155/NB0007	UKrSEPRO CERTIFICATE	CLL 19.0370U
MARINE APPROVALS	LRS: LR2320739TA	KCS CERTIFICATE	781E: 19-AV4BO-0255X, 781D: 19-AV4BO-0254X
INMETRO APPROVAL	TÜV 12.1330U		
SANS	IA S-XPL21962 21.0304U		

**HOW TO ORDER**

e.g. 781 - D - M - 3 = Ex d - M25

e.g. 781 - E - M - 3 = Ex e - M25

Other thread variations are available on request. For further information on ordering please refer to the Ordering Accessories page.

The CMP 781E range of Increased Safety type 'e' breather / drain plugs have been tested together with CMP serrated washers to ensure that in areas that are subject to vibration the plug does not suffer from self-loosening and inadvertently fall out of the enclosure. Serrated washers are not included as standard but can be ordered separately.

**PRODUCT SELECTION TABLE**

ORDERING REFERENCE (781D)	ORDERING REFERENCE (781E)	THREAD SIZE	MINIMUM THREAD LENGTH	PROTRUSION LENGTH 'F'	ACROSS FLATS DIMENSION	ACROSS CORNERS DIMENSIONS
781DM2	781EM2	M20 x 1.5	15.0	12.7	30.0	33.0
781DM3	781EM3	M25 x 1.5	15.0	12.7	36.0	39.6
781DT1	781ET1	1/2" NPT	19.9	12.7	30.0	33.0
781DT2	781ET2	3/4" NPT	20.2	12.7	36.0	39.6

All dimensions shown are in millimetres unless otherwise stated